

RECEIVED

JUL 28 2003

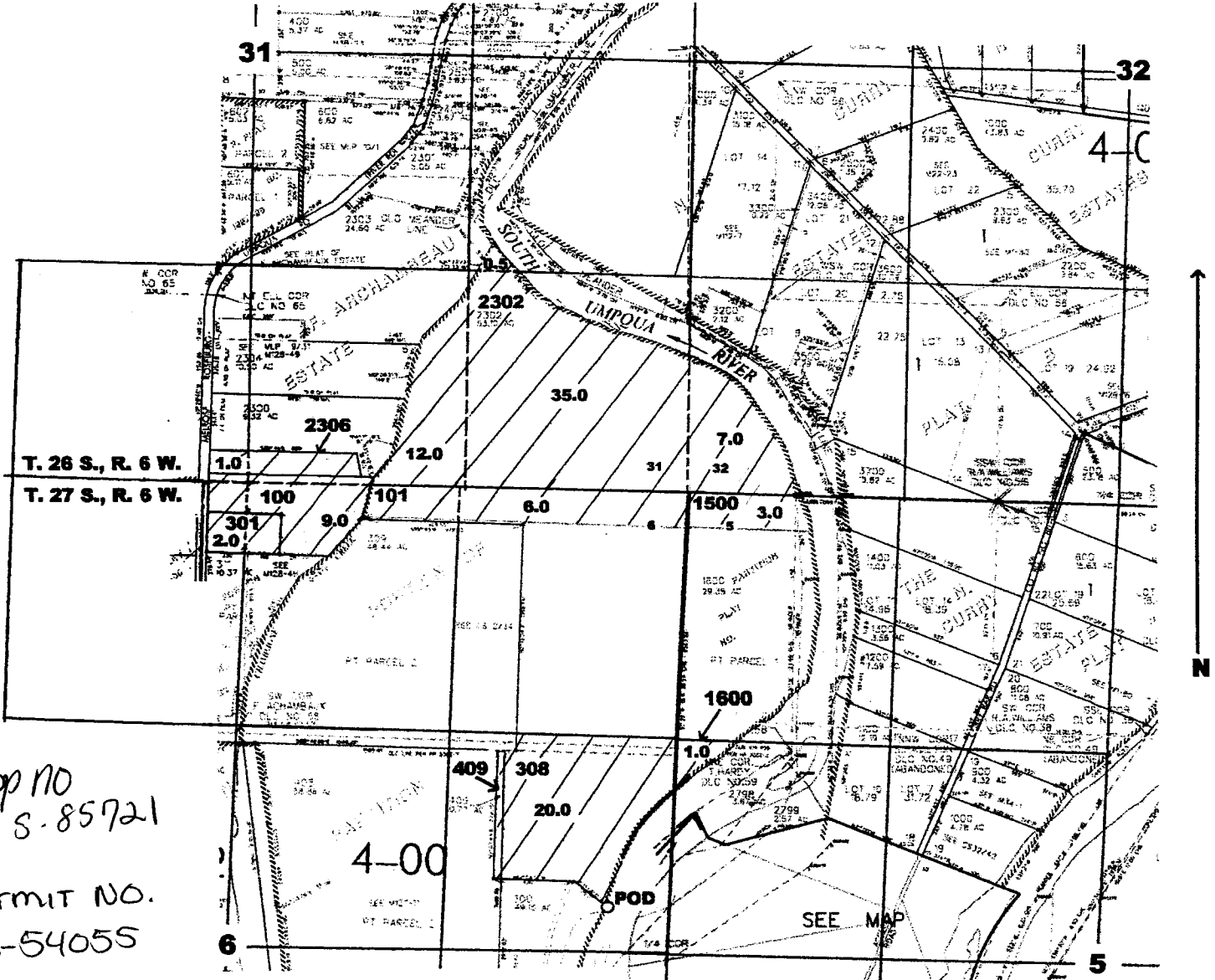
WATER RESOURCES DEPT.
SALEM, OREGON

RECEIVED

JUN 19 2003

WATER RESOURCES DEPT.
SALEM, OREGON

Scale: 1" = 1000'



POD is located 300 ft. N. and 380 ft. W. from the E. 1/4 corner of S¹c. 6

4. **DESCRIPTION OF PROPOSED PROJECT:** Include a description of the intended place of use as shown on the accompanying site map, the method of water diversion, the type of equipment to be used (including pump horsepower, if applicable), length and dimensions of supply ditches and pipelines:

96.5 acres being 1.0 in the SESW, 0.5 in the NESE, 12.0 in the SWSE, 35.0 in the SESE of Sec. 31; 7.0 in the SWSW of Sec. 32, all within T. 26 S., R. 6 W.; 3.0 in the NWNW, 1.0 in the SWNW of Sec. 5; 6.0 in the NENE, 9.0 in the NWNE, 20.0 in the SENE, 2.0 in the NENW of Sec. 6, all within T. 27 S., R. 6 W.

6 cylinder diesel pump.

RECEIVED

JUN 19 2003

WATER RESOURCES DEPT.
SALEM, OREGON