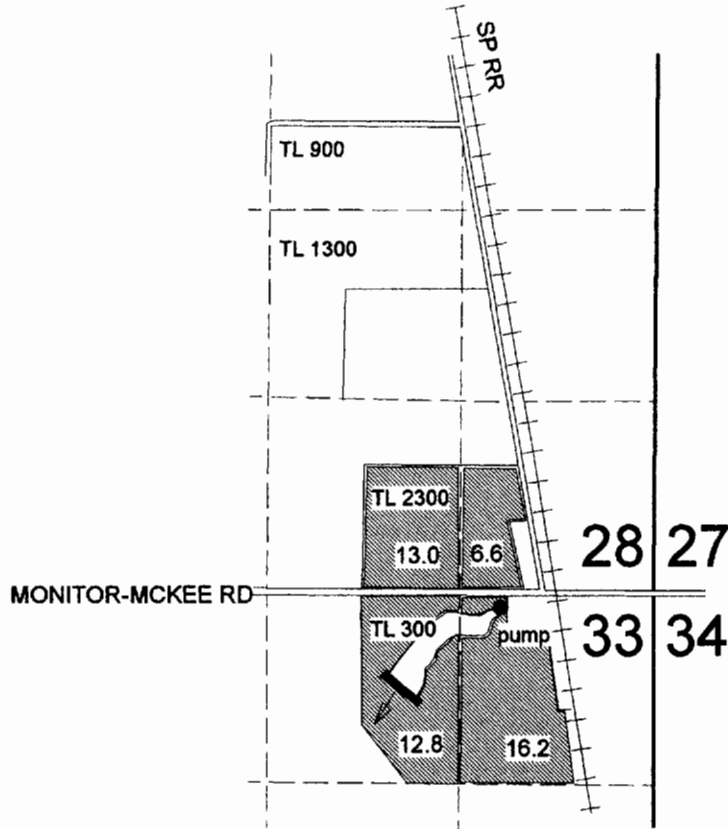


APPLICATION MAP

T 5 S R 1 W Sections 28 and 33

FESSLER FAMILY LLC
WOODBURN NURSERY AND AZALEAS INC.



RECEIVED
DEC 17 2002

Reservoir Div. Pt.: 660' south and 920' east
of the north 1/4 corner section 33

Pump: 120' south and 1600' east
of the north 1/4 corner section 33

app # S-85381
permit # S-54056

 Supplemental Nursery Use

4" = 1 mile



Don Knauer Consulting
PO Box 5416
Salem OR 97304
503-585-8474