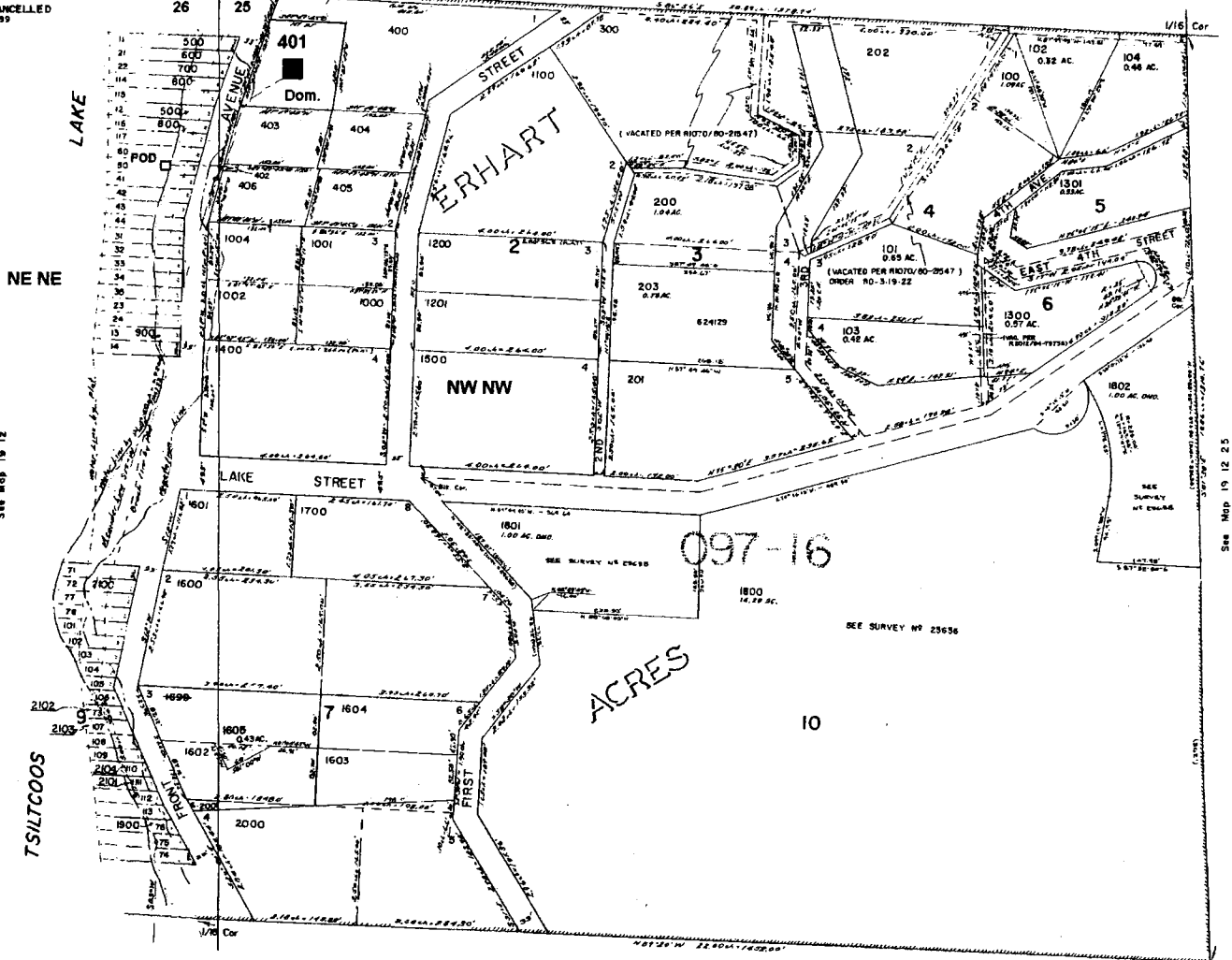


LANE COUNTY

Scale: 1" = 250'

CANCELLED  
1699



See Map 19 12

See Map 19 12 25

POD is located 250 ft. S. and 75 ft. W. from NW corner of Sec. 25

**RECEIVED**

MAY 21 2003

WATER RESOURCES DEPT.  
SALEM, OREGON

app# S-85650 Permit # S-54057

**RECEIVED**

JUN 17 2003

WATER RESOURCES DEPT.  
SALEM, OREGON