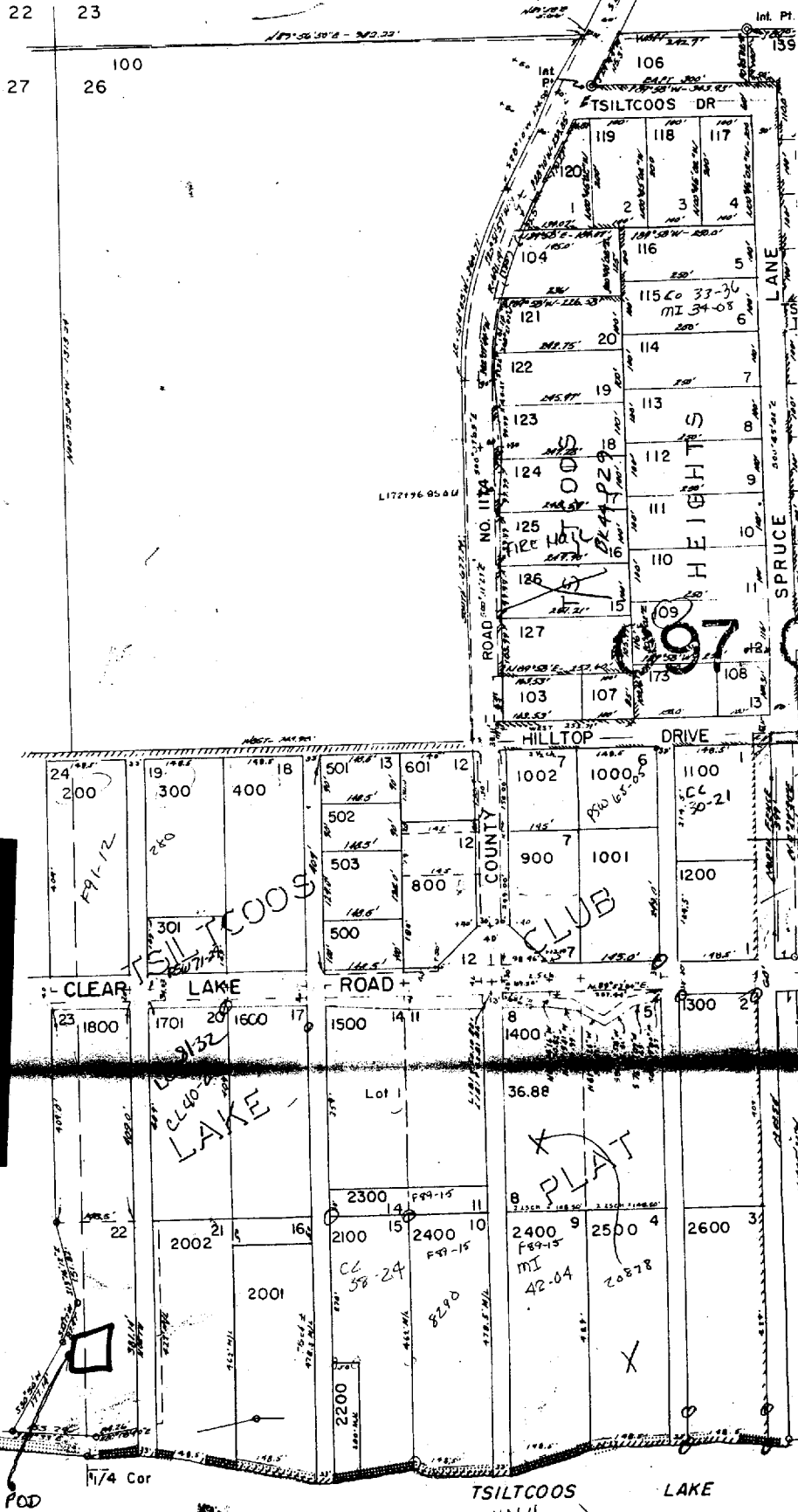


1" = 200'

See Map 19 12 23 3 3



RECEIVED

AUG 13 2003

WATER RESOURCES DEPT.  
SALEM, OREGON

Note - POD is  
 140' West  
 60' South  
 of the S.W.  
 1/4 CORNER  
 of Sec 26

1" = 200'

097-02

Permit # S-54064

See Map 19 12

TSILTCOOS  
 LAKE  
 CLUB