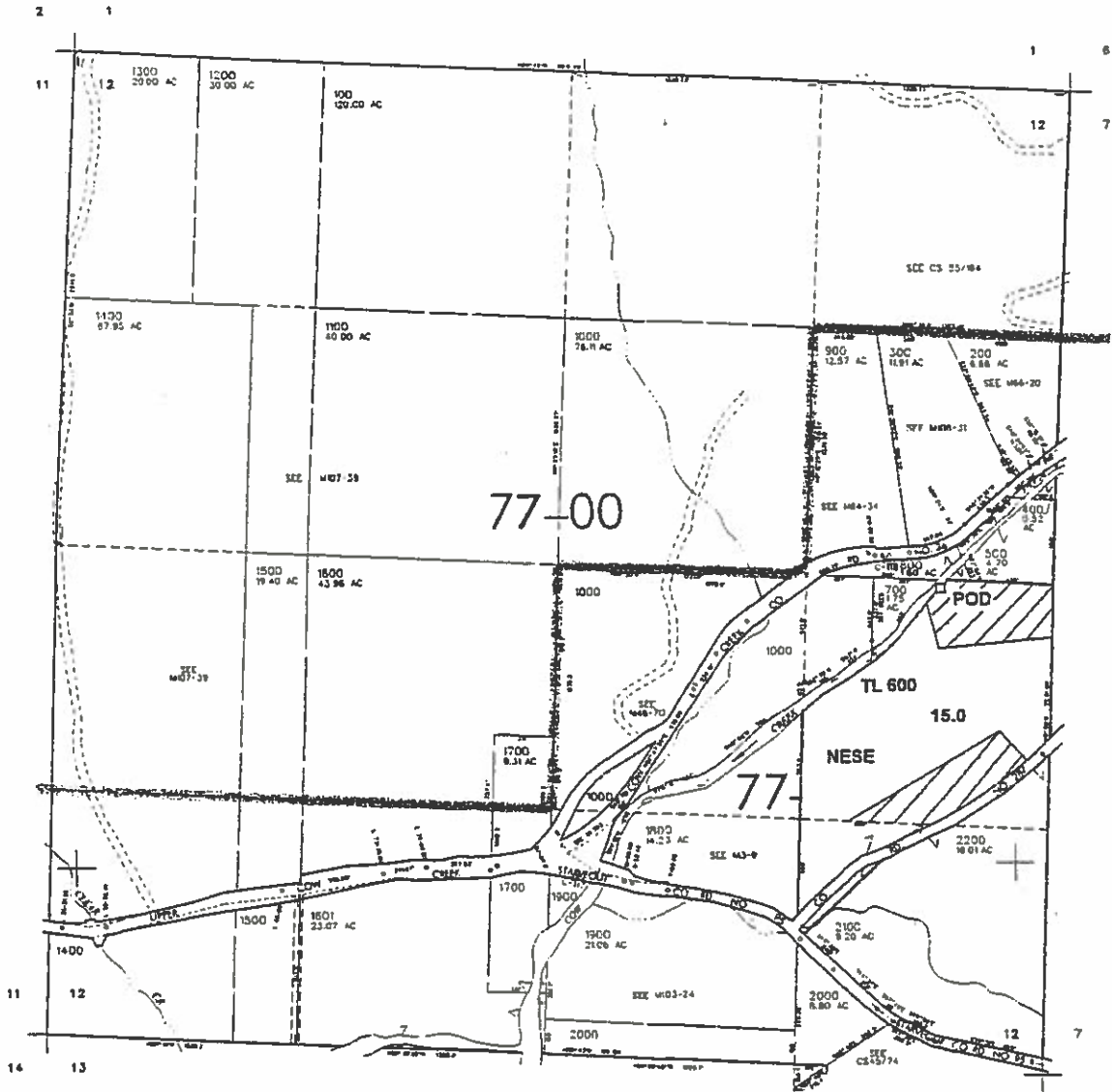


SEC. 12 T.32S. R.5 W. W.M.
DOUGLAS COUNTY

Scale: 1" = 1000'



POD is located 50 ft. S. and 600 ft. W. from the E. 1/4 corner of Sec. 12

App no S-85713

Permit no. S-54067

RECEIVED

JUL 23 2003

WATER RESOURCES DEPT.
SALEM, OREGON

Bill Harpell