

FOR ASSESSMENT
AND TAXATION
ONLY

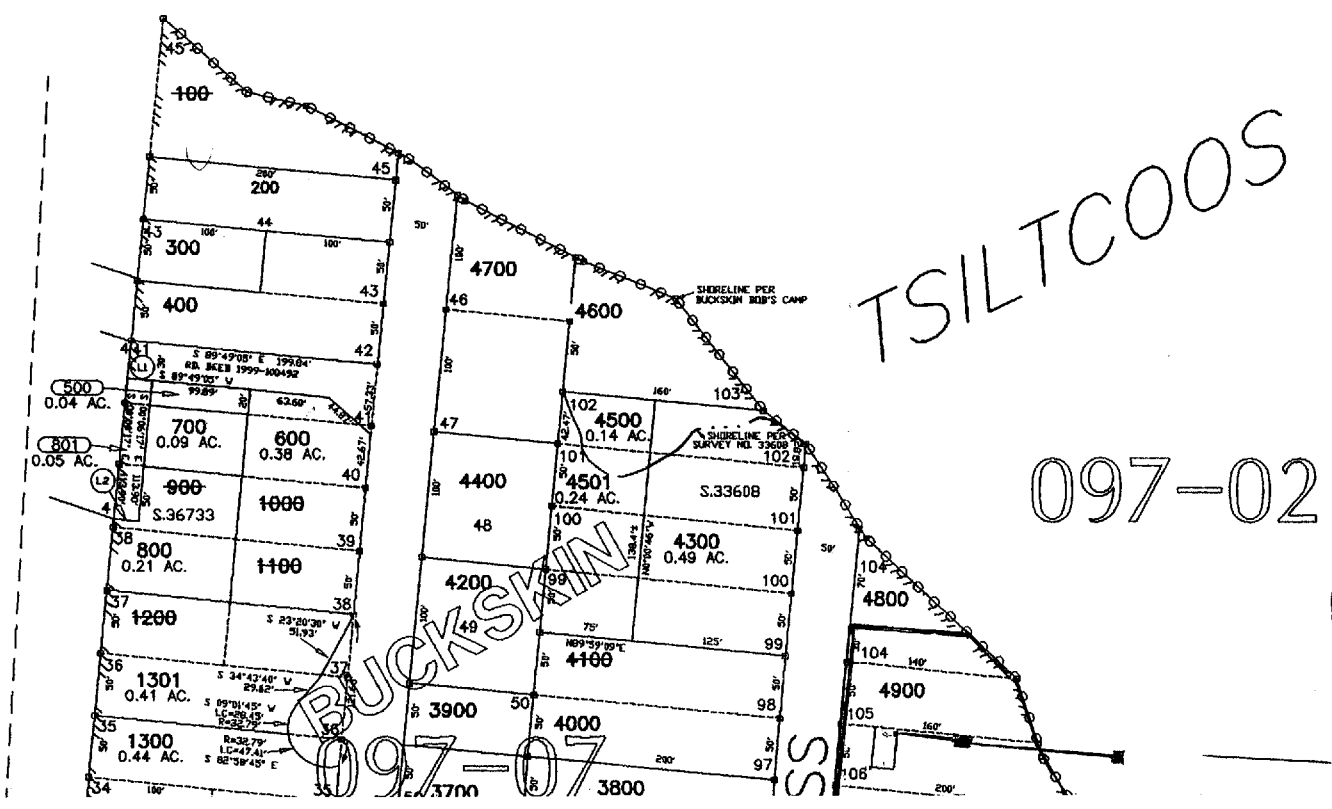
NW/4 NE/4 SECTION 26 T.19S. R.12W. W.M.
LANE COUNTY

SCALE 1" = 100'

SEE MAP 19 12 23

DATE	REVISION	EMPLOYEE
11/12/02	CORR. BOT. YL'S 506, 780, 806, 801 & 1301	LCAT479
11/12/02	CORR. 1480 & PTN. 1580 INTO 1500	LCAT479

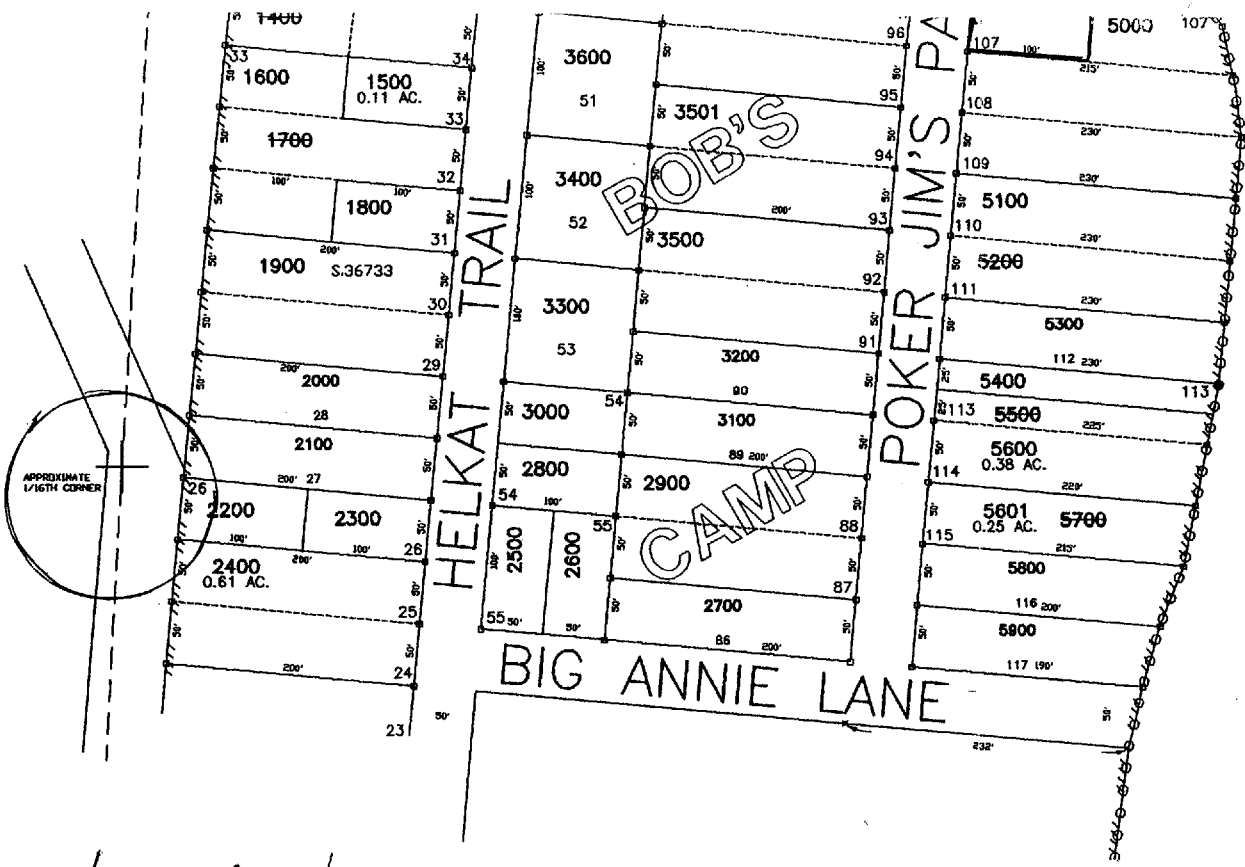
19 12
DUNES
NAD 83/



app# S-85648
Permit# 54673

- CANCEL
- 100
- 1000
- 1100
- 1200
- 1400
- 1700
- 4100
- 5200
- 5500
- 5700
- 900

POINT OF DIVERSION:
NORTH 1/16 COR. SEC.26
870' EAST 490' NORTH



County: Lane County
 Basin: 18-mid coast

SEE MAP 19 12 26 13

LAKE

House



Foot Valve

LINE TABL
 L1 19.96'
 L2 26.00'

REC
 JUL
 WATER R
 SALI

19 12
 DUNES