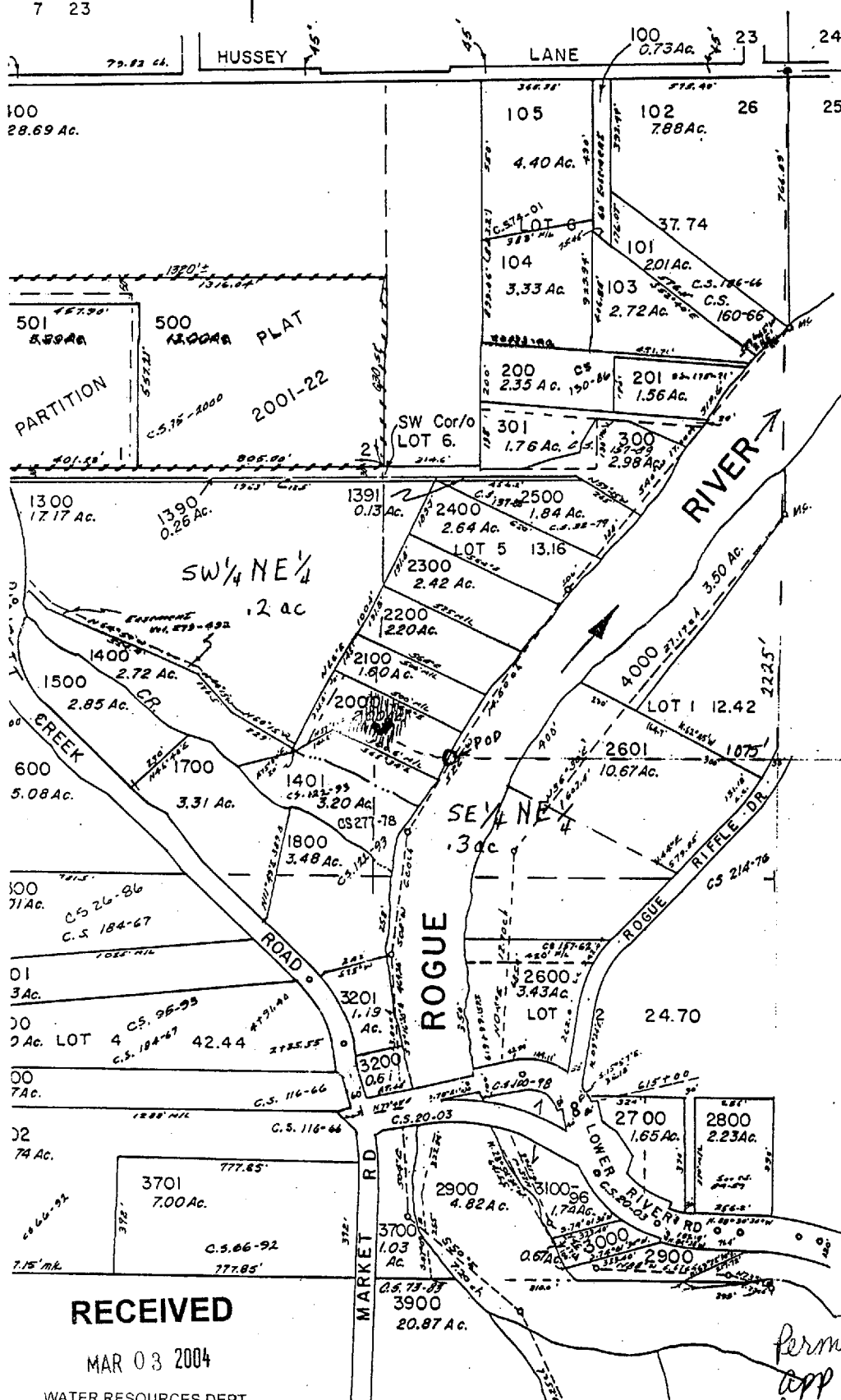


Josephine County, Oregon

17W. W.M. T.35S. R.7W Sec 26  
NTY

35 7 26  
scale 1" = 400'

P.O.D. located South 2225' and  
West 1075' from NE corner Sec 26  
Being within SE 1/4 NE 1/4 T 35S R 7W sec 26



Cancelled Tax Lot

- 490
- 590
- 690
- 691
- 692
- 693
- 891
- 1200
- 1601
- 1690
- 1691
- 1900
- 2602
- 3500
- 694
- 606
- 390
- 391
- 591
- 592

SEE MAP 35 7 26

**RECEIVED**  
AUG 19 2003  
WATER RESOURCES DEPT.  
SALEM, OREGON

**RECEIVED**

MAR 03 2004

WATER RESOURCES DEPT

Permit no 54094  
app no. 85743