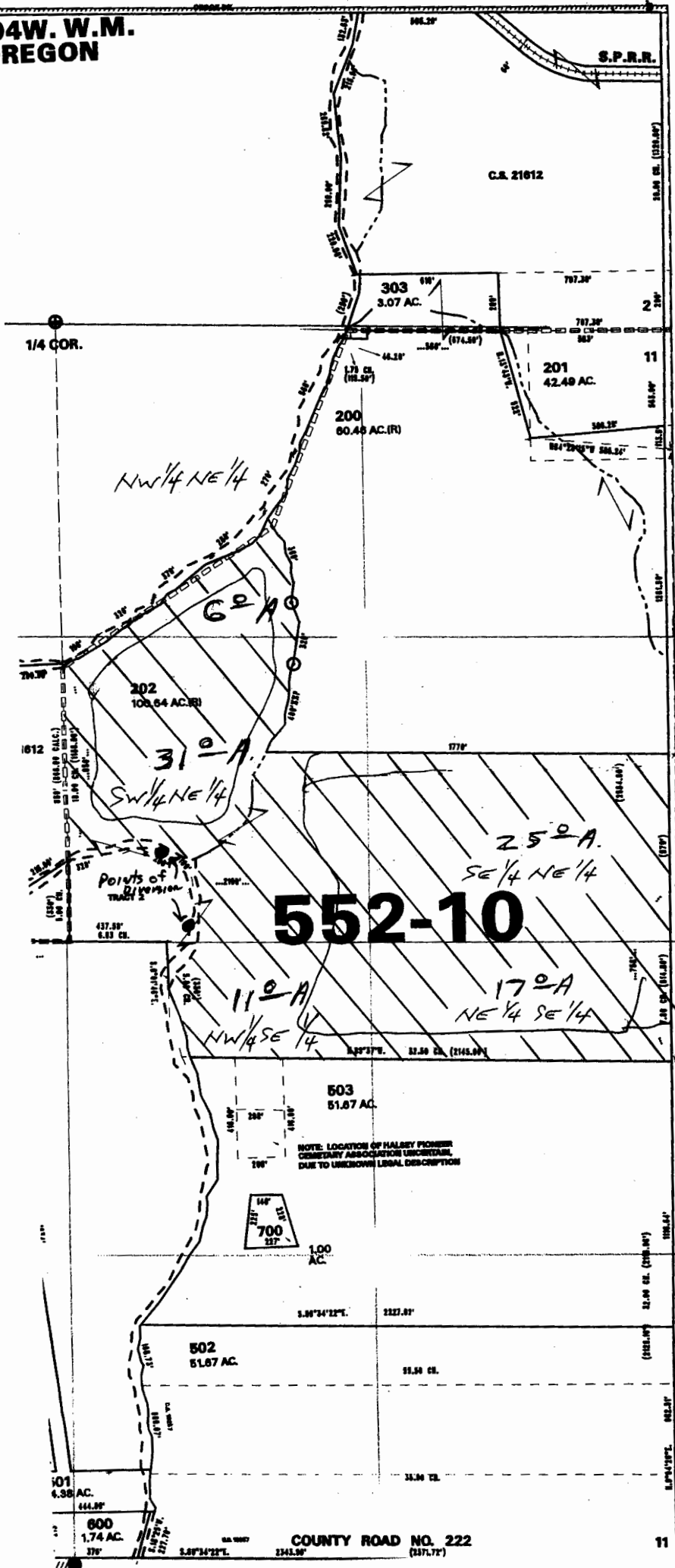


04W. W.M.
OREGON

14 4W 11



RECEIVED

APR 19 2004

WATER RESOURCES DEPT
SALEM, OREGON

App. NO. S-85984
PERMIT NO. 54109

SEE MAP 14 4W 12

NORTH



1" = 410 feet

yellow shaded area
to be irrigated approx.
80 Acres out of 100.
will be using portable pump, so 000's

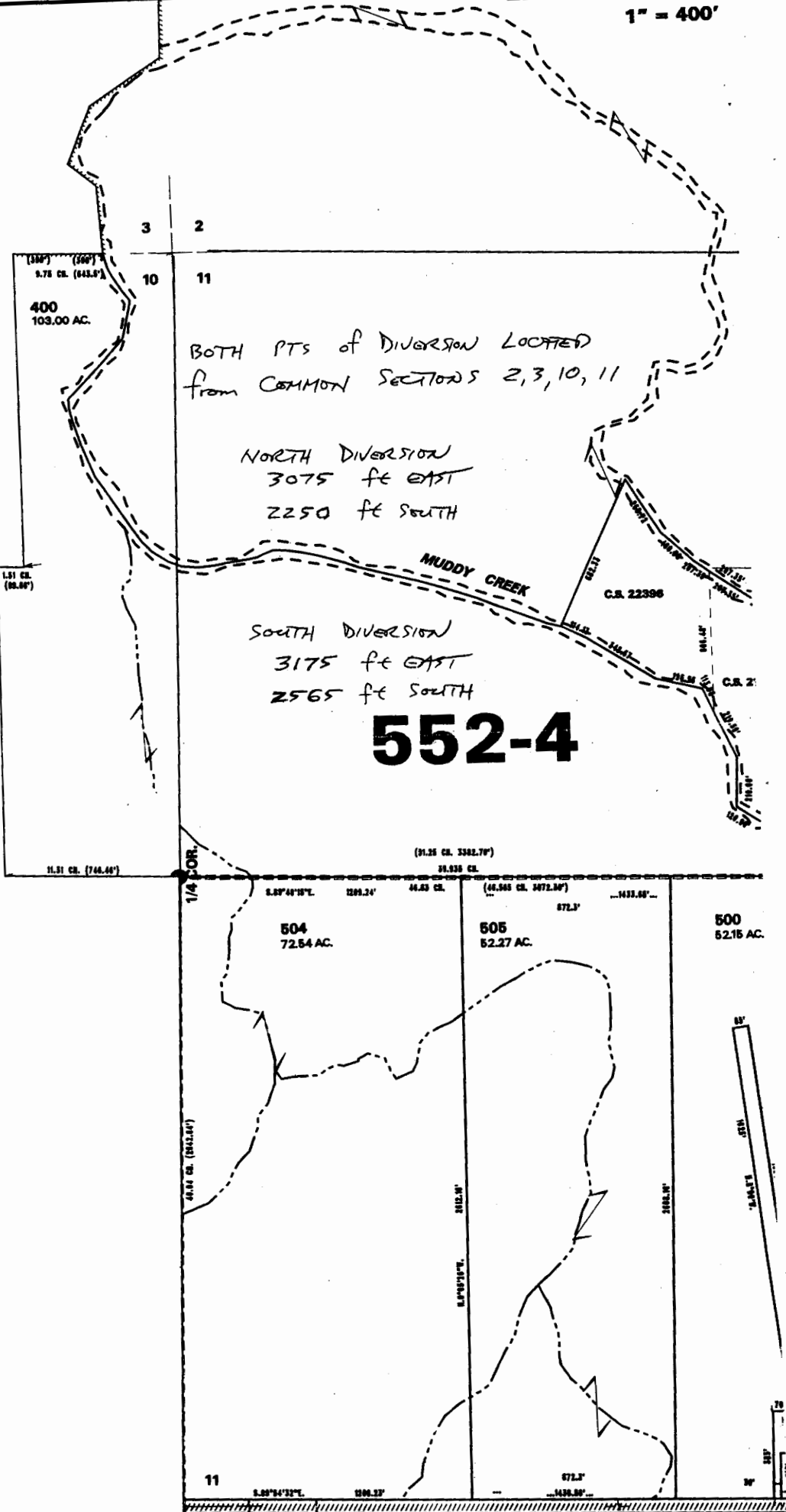
14 4W 11

THIS MAP WAS PREPARED FOR ASSESSMENT PURPOSES ONLY

300
293.52 AC.

CROOK R.
SEC. 11 T. 14S. R. 1
LINN COUNTY, C

1" = 400'



BOTH PTS of DIVERSION LOCATED
from COMMON SECTIONS 2, 3, 10, 11

NORTH DIVERSION
3075 ft EAST
2250 ft SOUTH

SOUTH DIVERSION
3175 ft EAST
2565 ft SOUTH

552-4

SEE MAP 14 4W 10

300' 300'
0.75 CR. (648.0')

400
103.00 AC.

1.51 CR. (60.80')

11.51 CR. (740.80')

1/4 COR.

(31.25 CR. 1250.00')

31.25 CR.

5.87°40'10"W 1200.24'

44.83 CR.

(46.545 CR. 1872.80')

572.3'

1433.60'

504
72.54 AC.

505
52.27 AC.

500
52.15 AC.

40.80 CR. (1632.00')

8.40°00'00"W 2152.00'

2152.00'

8.40°00'00"W 2152.00'

11

8.40°00'00"W 2152.00'

572.3'

1433.60'

8.40°00'00"W 2152.00'