

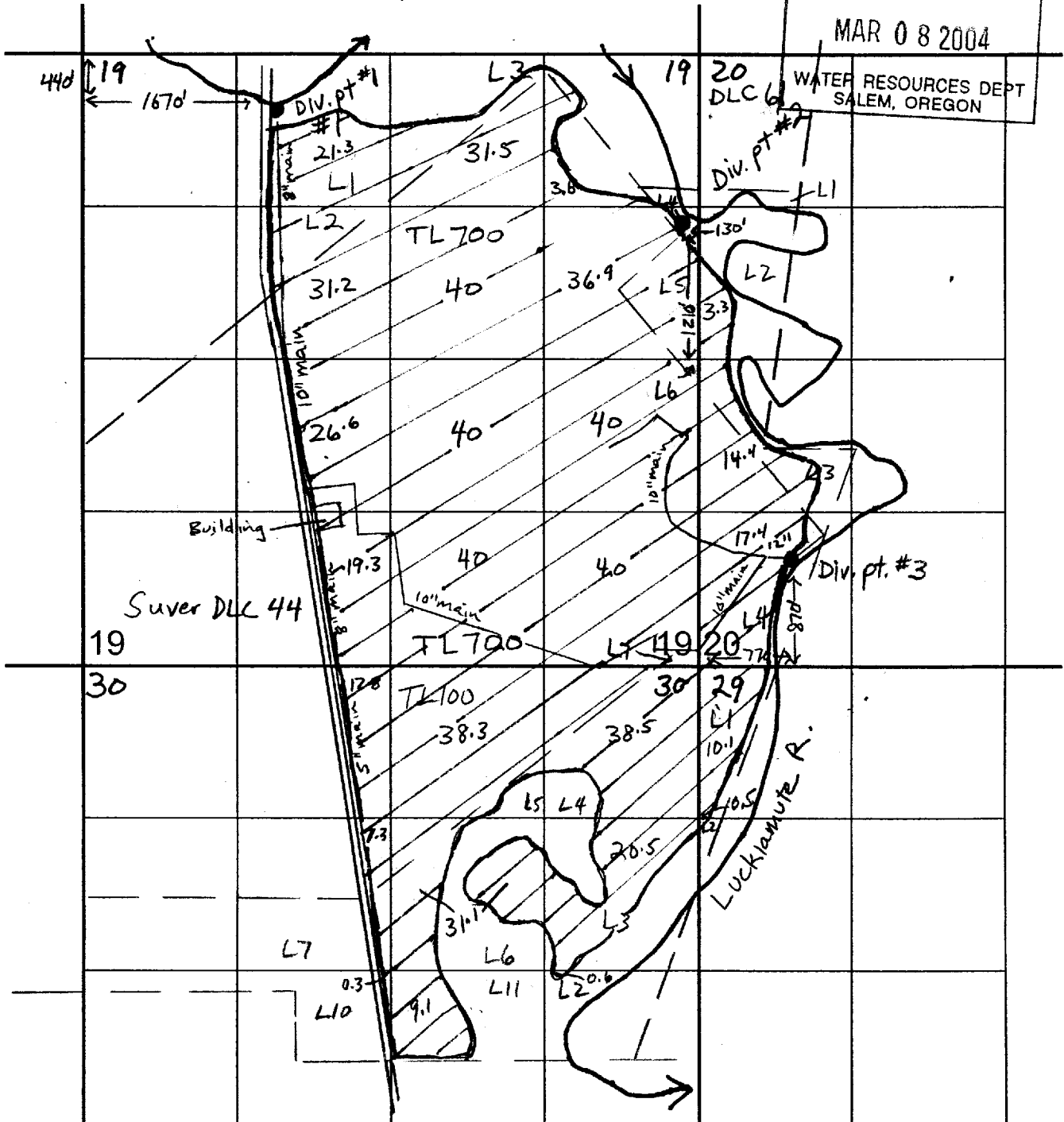
T. 9S., R. 4W., W.M.
 Sections 19, 20, 29, 30

Polk County
 Willamette Basin, Luckiamute Sub-Basin

RECEIVED

MAR 08 2004

WATER RESOURCES DEPT
 SALEM, OREGON



Diversion point #1- Lot 1 (NE 1/4 NW 1/4) Section 19, 440' S. & 1670' E. from NW corner Sec. 19

Diversion point #2- Lot 5 (SE 1/4 NE 1/4) Section 19, 1210' N. & 130' W. of NE corner of SE 1/4 of Sec. 19

Diversion point #3- Lot 4 (SW 1/4 SW 1/4) Section 20, 870' N. & 770' E. from SW corner Sec. 20

J. Frank Schmidt & Son Co.
 Groundwater Application
 Scale: 1" = 1320'

Permit # 54113

App No S 85961