

SECTION 16
NE 1/4 SE 1/4
P.O.D.

RECEIVED

JAN 20 2004

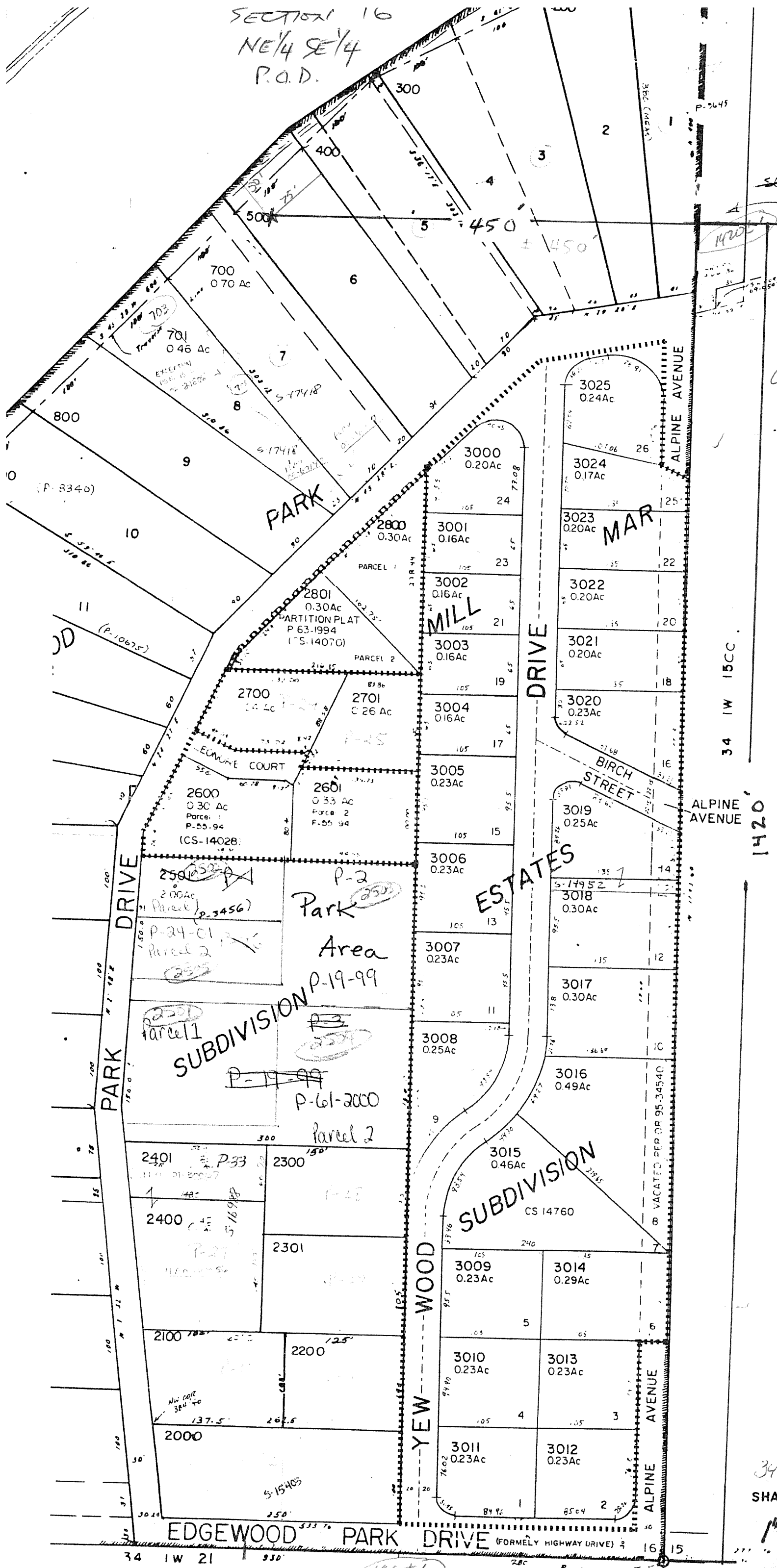
WATER RESOURCES DEPT
SALEM, OREGON

341W15CB

see 341W15CB

ORIGINAL

App # 585915



34 1W 15CC

1420



341W 16DD
SHADY COVE

1"=100'

34 1W 21

930

440±

21 22