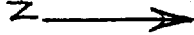


RECEIVED

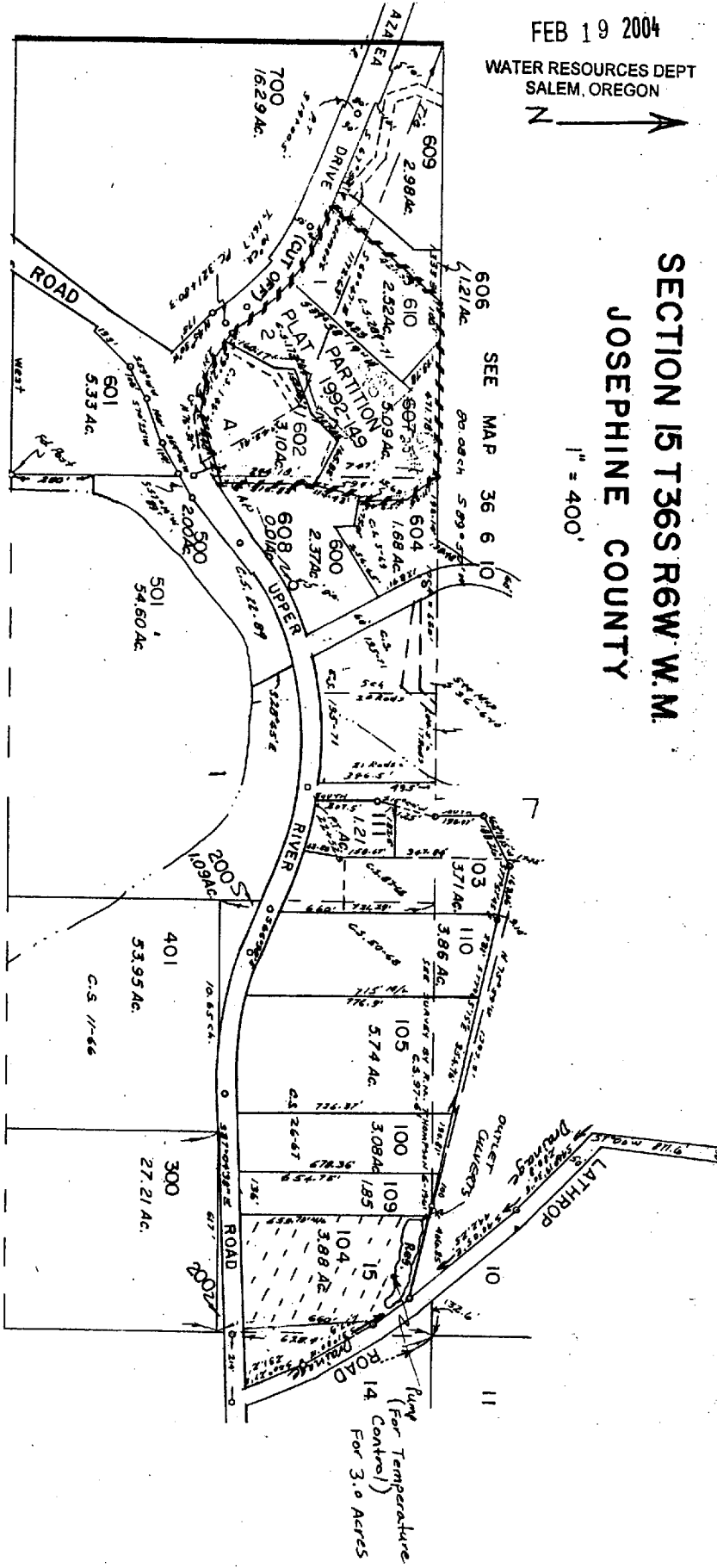
FEB 19 2004

WATER RESOURCES DEPT
SALEM, OREGON



SECTION 15 T36S R6W W.M.
JOSEPHINE COUNTY

1" = 400'



Pump Located

110 ft. S and 180 ft. W
From NE Cor. Section 15
T36S R6W W.M.
1/4 NE 1/4 NE 1/4

Outlet Culverts

20 ft S. and 360 ft W
From NE Cor. Section 15
T36S R6W W.M.
1/4 NE 1/4 NE 1/4

Application No. S-8594D
Permit No. 54118