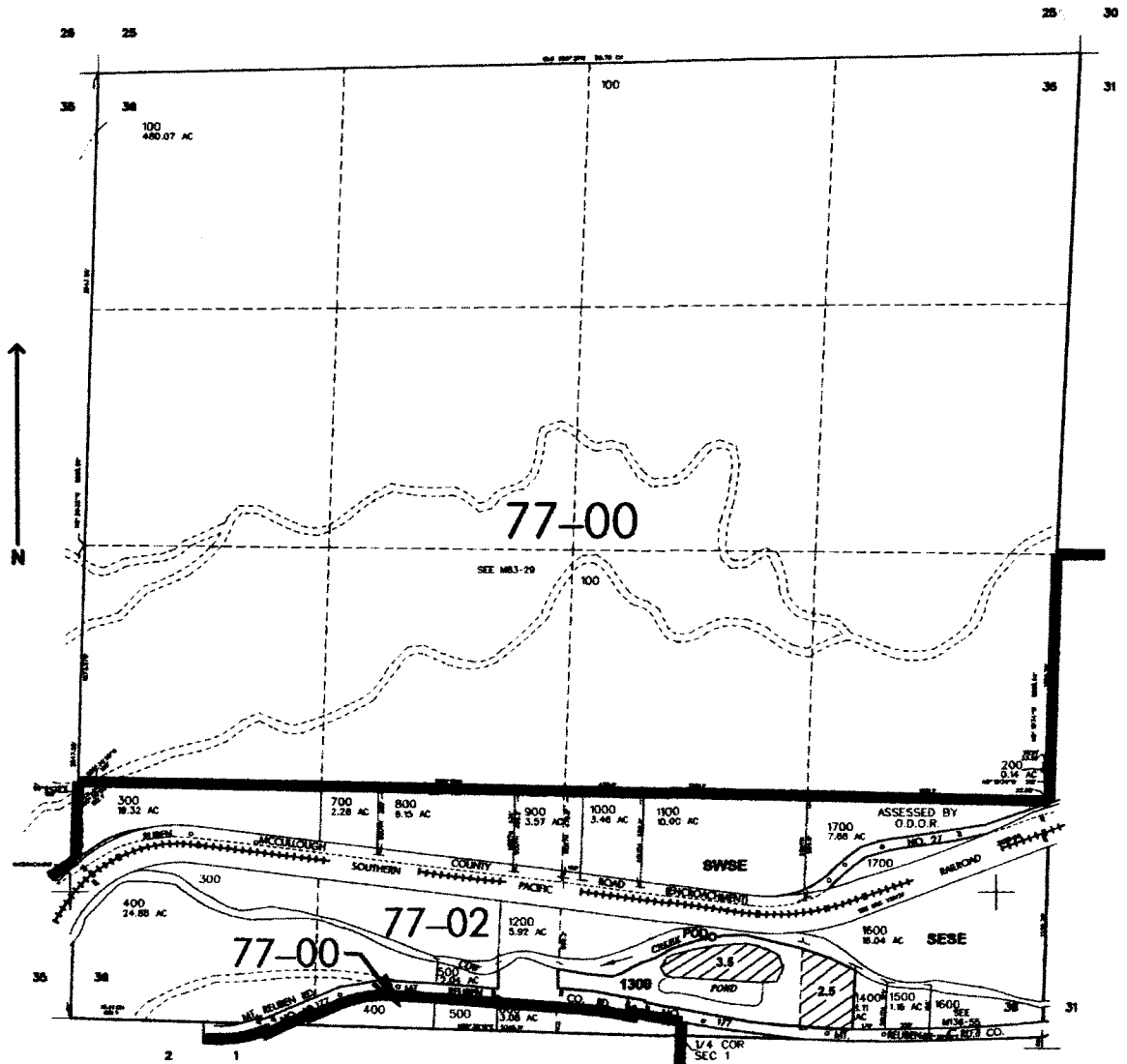


SEC. 36 T.32S. R.7 W. W.M.  
DOUGLAS COUNTY

Scale: 1" = 1000'



POD is located 520 ft. N. and 1800 ft. W. from the S.E. corner of Sec. 36

**RECEIVED**  
JUN 21 2004  
WATER RESOURCES DEPT  
SALEM, OREGON

Application No. S 86036

Permit No.