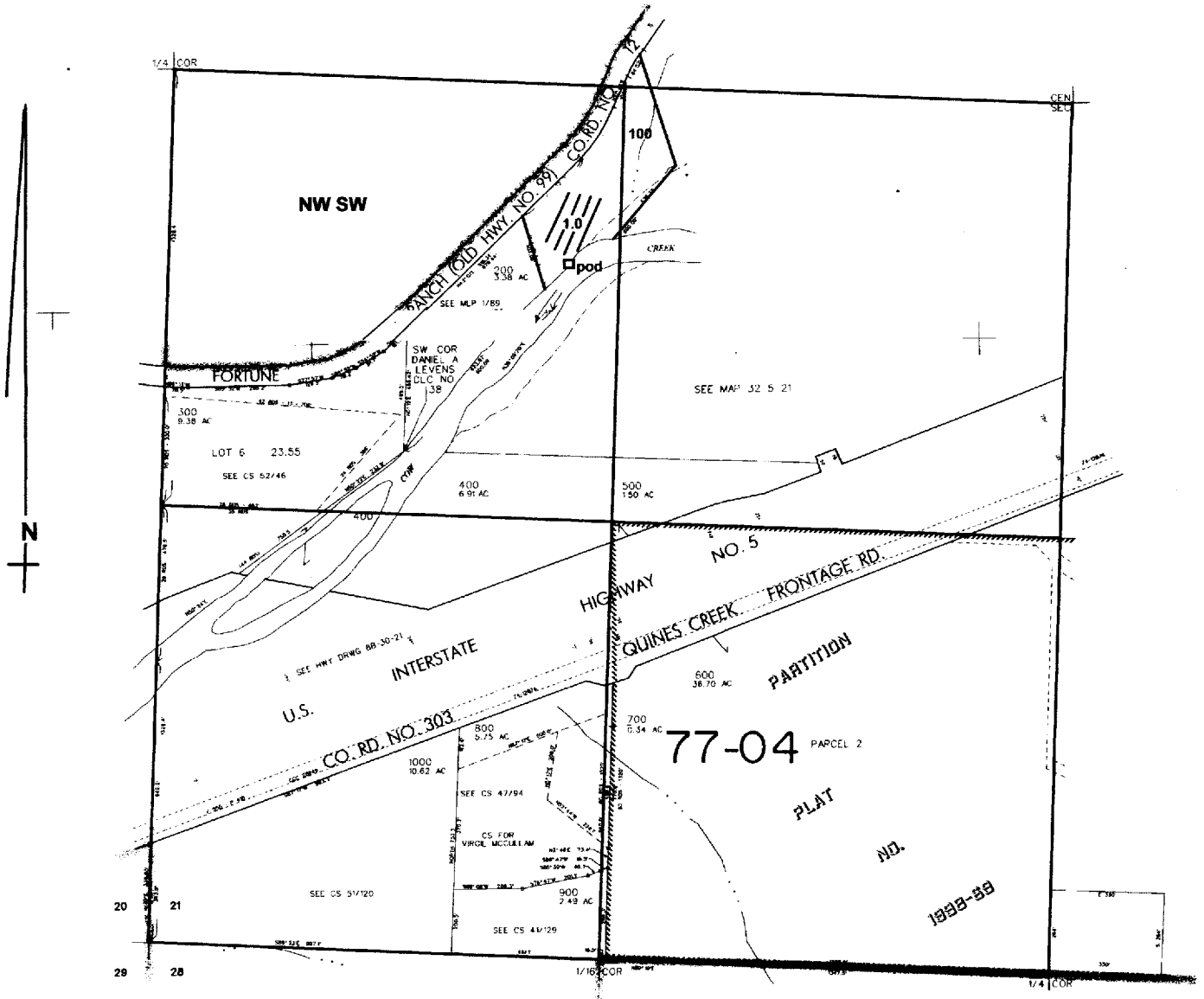


SW/4 SEC. 21 T.32S. R.5 W. W.M.
DOUGLAS COUNTY

Scale: 1" = 500'



POD is located 550 ft. S. and 1200 ft. E. from the W. 1/4 corner of Sec. 21

RECEIVED
APR 06 2004
WATER RESOURCES DEPT
SALEM, OREGON

App NO. S-85975
Permit NO. 54135