

RECEIVED

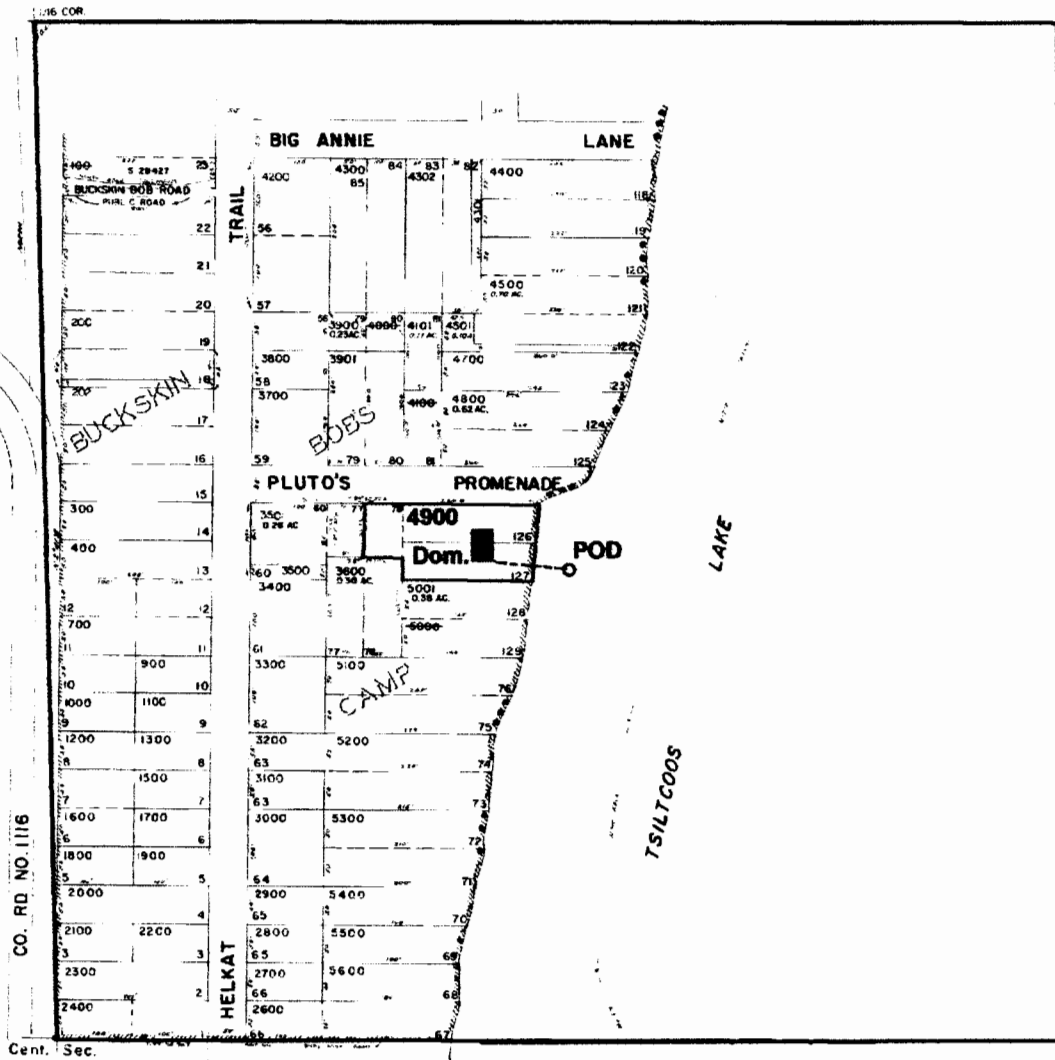
MAY 17 2004

WATER RESOURCES DEPT
SALEM, OREGON

SW1/4 NE1/4 Sec. 26 T19S. R12W. W.M.

LANE COUNTY

Scale: 1" = 260'



POD is located 620 ft. N. and 690 ft. E. from the center of Sec. 26

app no. S-86010