

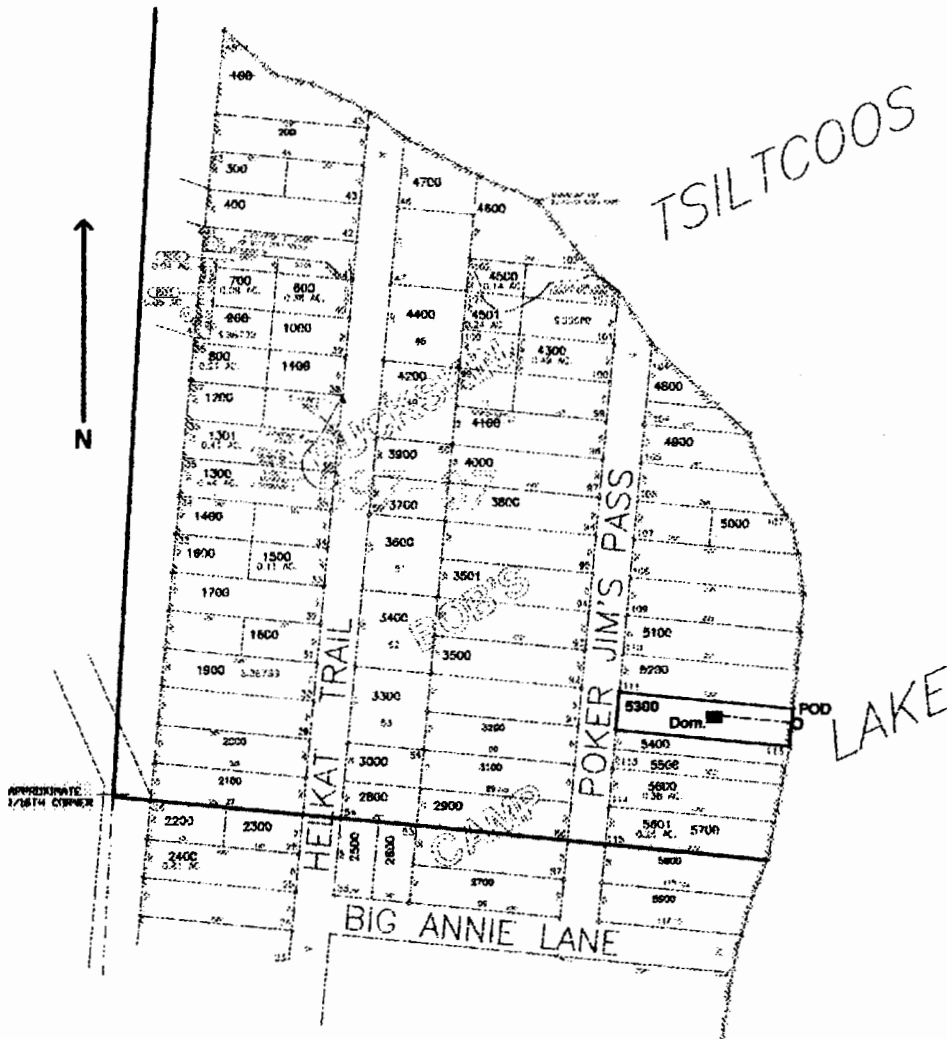
RECEIVED

MAY 21 2004

WATER RESOURCES DEPT  
SALEM, OREGON

NW/4 NE/4 SECTION 26 T.19S. R.12W. W.M.  
LANE COUNTY

Scale: 1" = 250'



POD is located 175 ft. N. and 890 ft. E. from the SW corner of the NW1/4 NE1/4 of Sec. 26