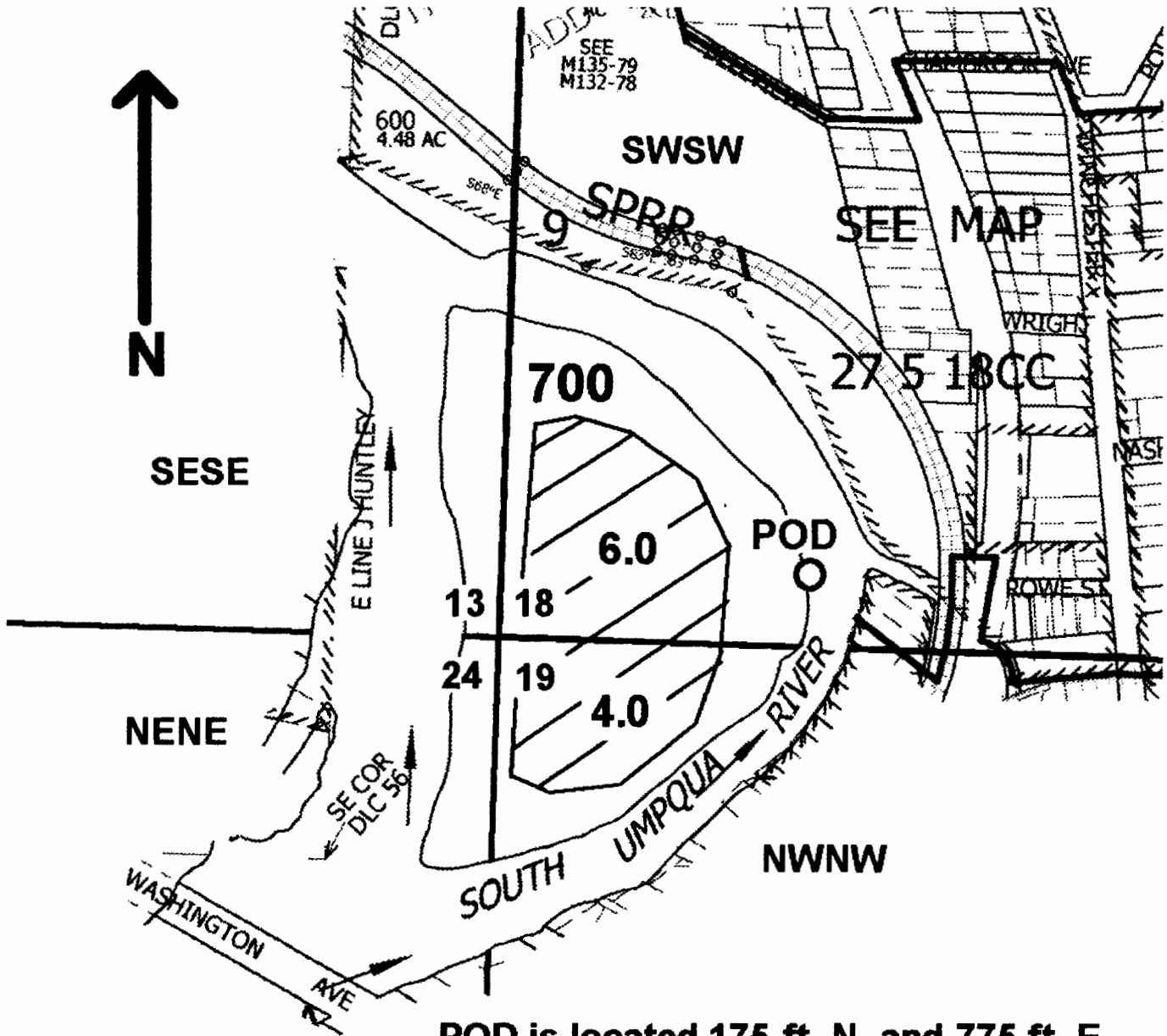


**T.27S. R.5W. W.M.
DOUGLAS COUNTY**

Scale: 1" = 400'



**POD is located 175 ft. N. and 775 ft. E.
from the SW corner of Sec. 18**

RECEIVED

MAY 24 2004

WATER RESOURCES DEPT
SALEM, OREGON

Appl. # S-86014