

WORK COPY



SECTION 14 T.14S. R.6W. W.M.
BENTON COUNTY

SEE MAP 14.6.11

THIS MAP WAS PREPARED FOR ASSESSMENT PURPOSES ONLY

14 6

REV. 06-11-
CANC
300
1000 THRU 1:

TAX Lot - 188395

Reference Point - SW corner of property - N 44° 20.957' W 123° 22.558'

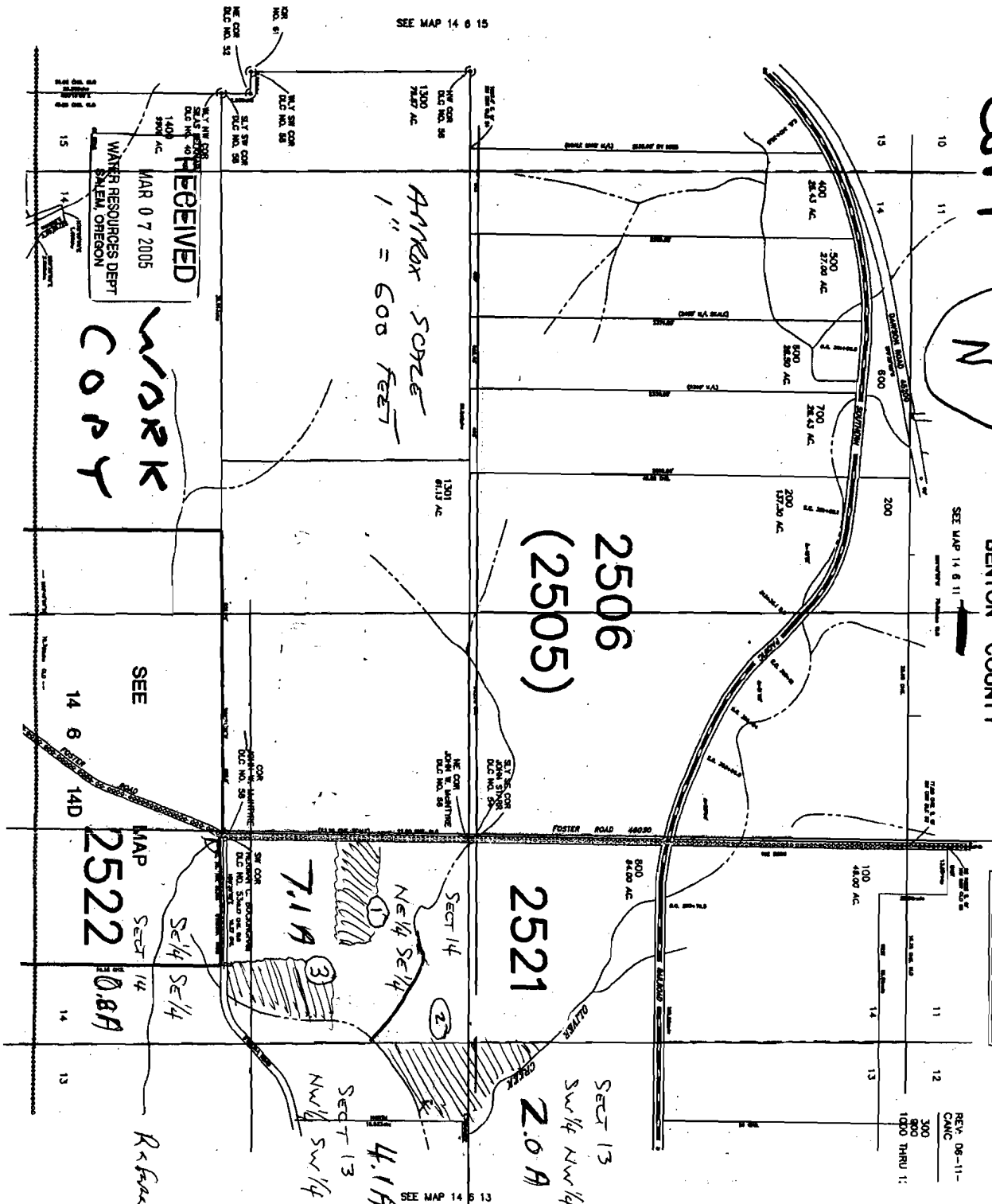
Pond 1 N 44° 21.128' 1085' n W 123° 22.990' from sec. 14

Pond 2 N 44° 21.172' 3780' s W 123° 22.218' from ne. 14

Pond 3 N 44° 21.040' 1700' n W 123° 22.343' from se. 14

AREA TO BE IRREGARD

TOTAL 14 ACRES



WORK COPY

RECEIVED
MAR 07 2005
WATER RESOURCES DEPT
SALEM, OREGON

SEE

MAP SECT 14
2522

0.8A

Reference Point.

app # S86192

SEE MAP 14.6.15

SEE MAP 14.6.13