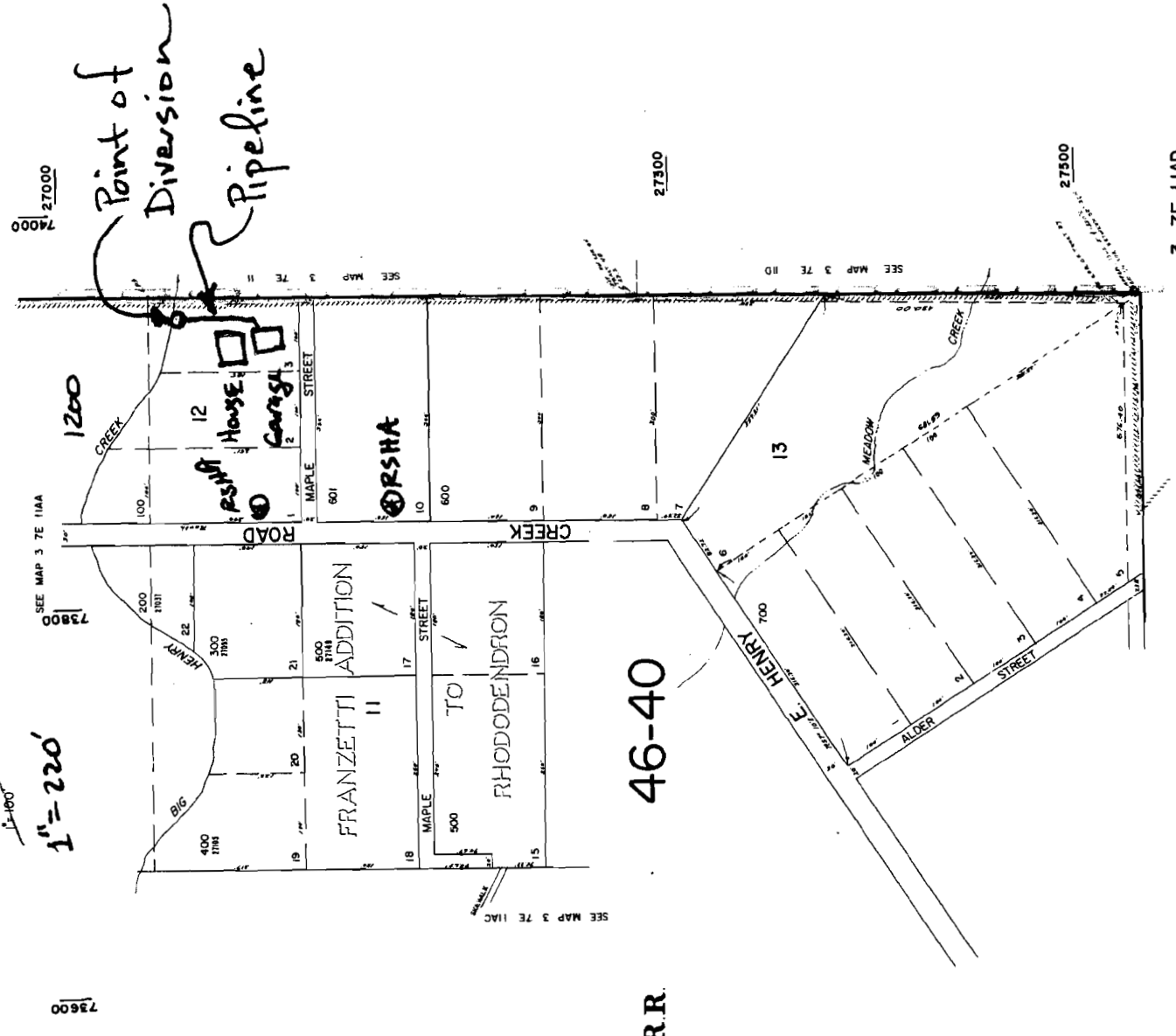


This map was prepared for assessment purposes only.

SE 1/4 NE 1/4 SEC. 11 T3S. R7E. W.M.
CLACKAMAS COUNTY

3 7E 11AD
RHODODENDRON

73600
27000



1" = 220'

Point of
Diversion
Pipeline

PT of DIV located
from NE Corner
Section 11
1490 feet South
720 feet West

46-40

R.R.

3 7E 11AD
RHODODENDRON
BOOK 34

SEE MAP 3 7E 11D

RECEIVED

MAR 29 2005

WATER RESOURCES DEPT
SALEM, OREGON