

app # S 86/89

APPLICATION MAP IN THE NAME OF

RECEIVED

BERRY CREEK DIV. PT.: 1730' N & 200' W
of the SE corner section 3

JENKS- OLSEN FARMS INC.

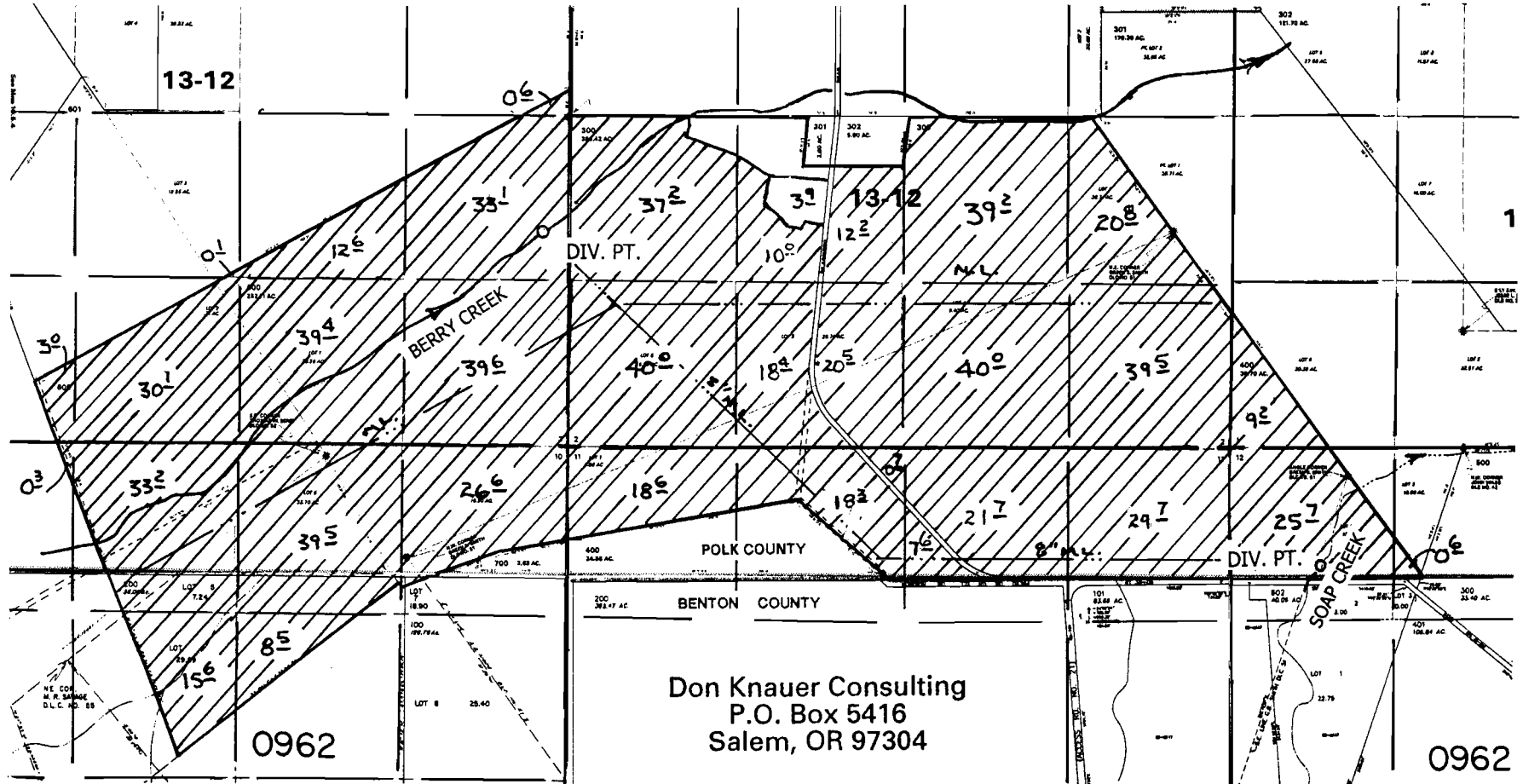
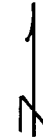
MAR 07 2005

WATER RESOURCES DEPT
SALEM, OREGON

SOAP CREEK DIV. PT.: 950' S & 725' E
of the NW corner section 12

T 10 S R 5 W, W.M.
Portions of sections 1,2,3,10,11 & 12

scale 4" = 1 mile



Don Knauer Consulting
P.O. Box 5416
Salem, OR 97304

0962