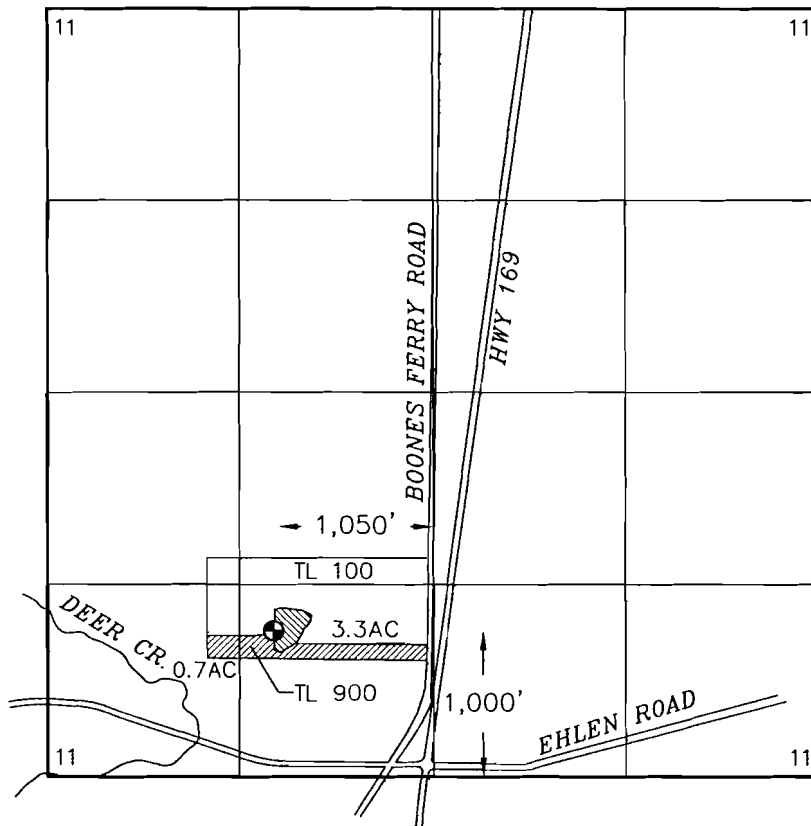





T4S, R1W W.M.
SECTION 11
MARION COUNTY
APPLICATION S-86149
1 INCH = 1320 FEET

RECEIVED
MAR 1 8 2005
WATER RESOURCES DEPT
SALEM, OREGON



EXPLANATION:

-  IRRIGATION 4.0AC
-  RESERVOIR 1.3AC
-  POINT OF DIVERSION

THIS MAP IS NOT INTENDED TO PROVIDE LEGAL DIMENSIONS OR LOCATIONS OF PROPERTY OWNERSHIP LINES.

GEOENGINEERS 

**REVISED APPLICATION MAP
WESTERN SUN LANDSCAPING**

FIGURE 1

PORT\p:\11294002\00\CAD\1129400200A.DWG EH2:MWJ 03/15/05