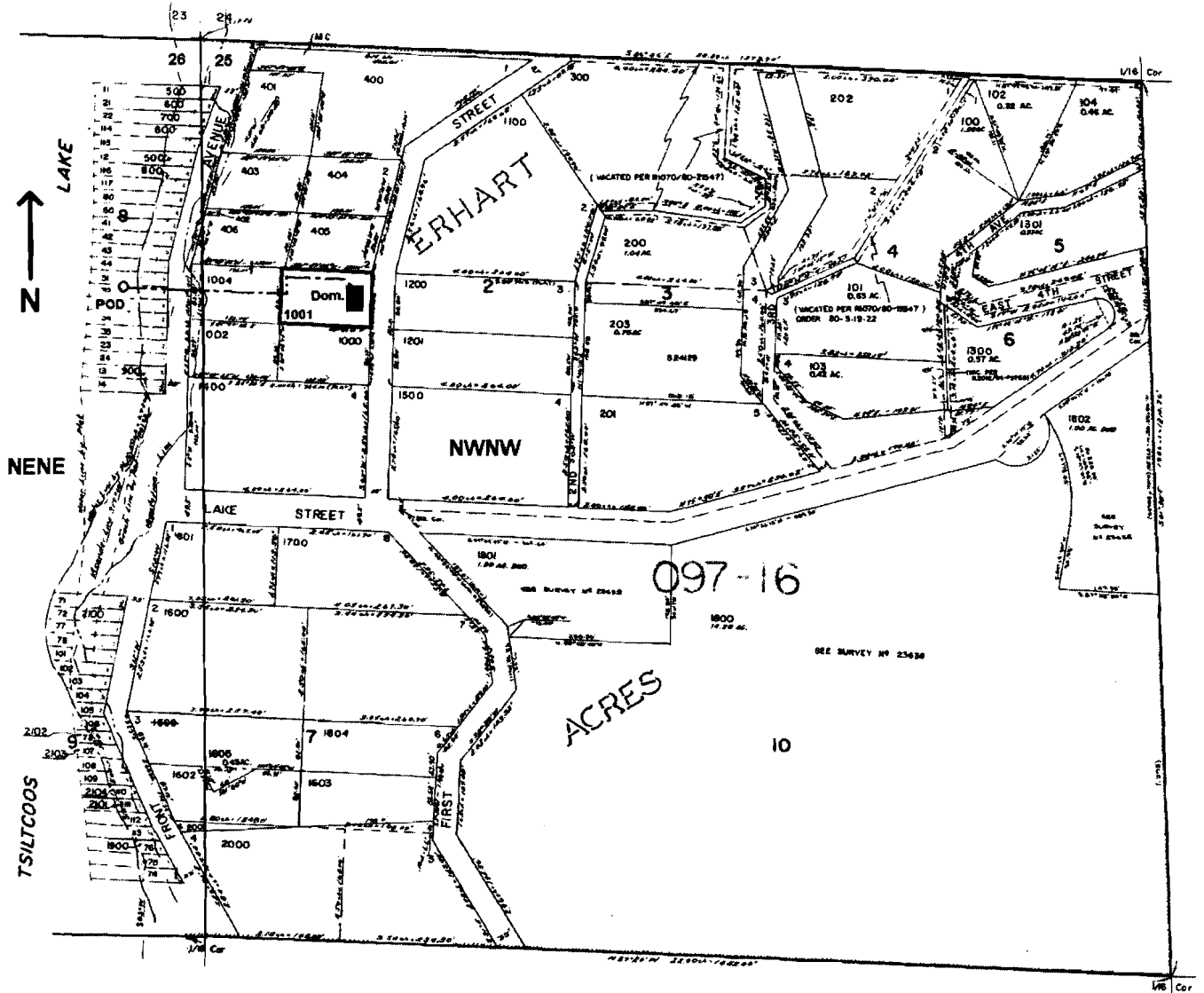


NW1/4 NW1/4 Sec. 25 T19S. R12 W.W.M.

LANE COUNTY

Scale: 1" = 250'



POD is located 365 ft. S. and 115 ft. W. from the NW corner of Sec. 25

app # 586240

RECEIVED

APR 04 2005

WATER RESOURCES DEPT.
SALEM, OREGON