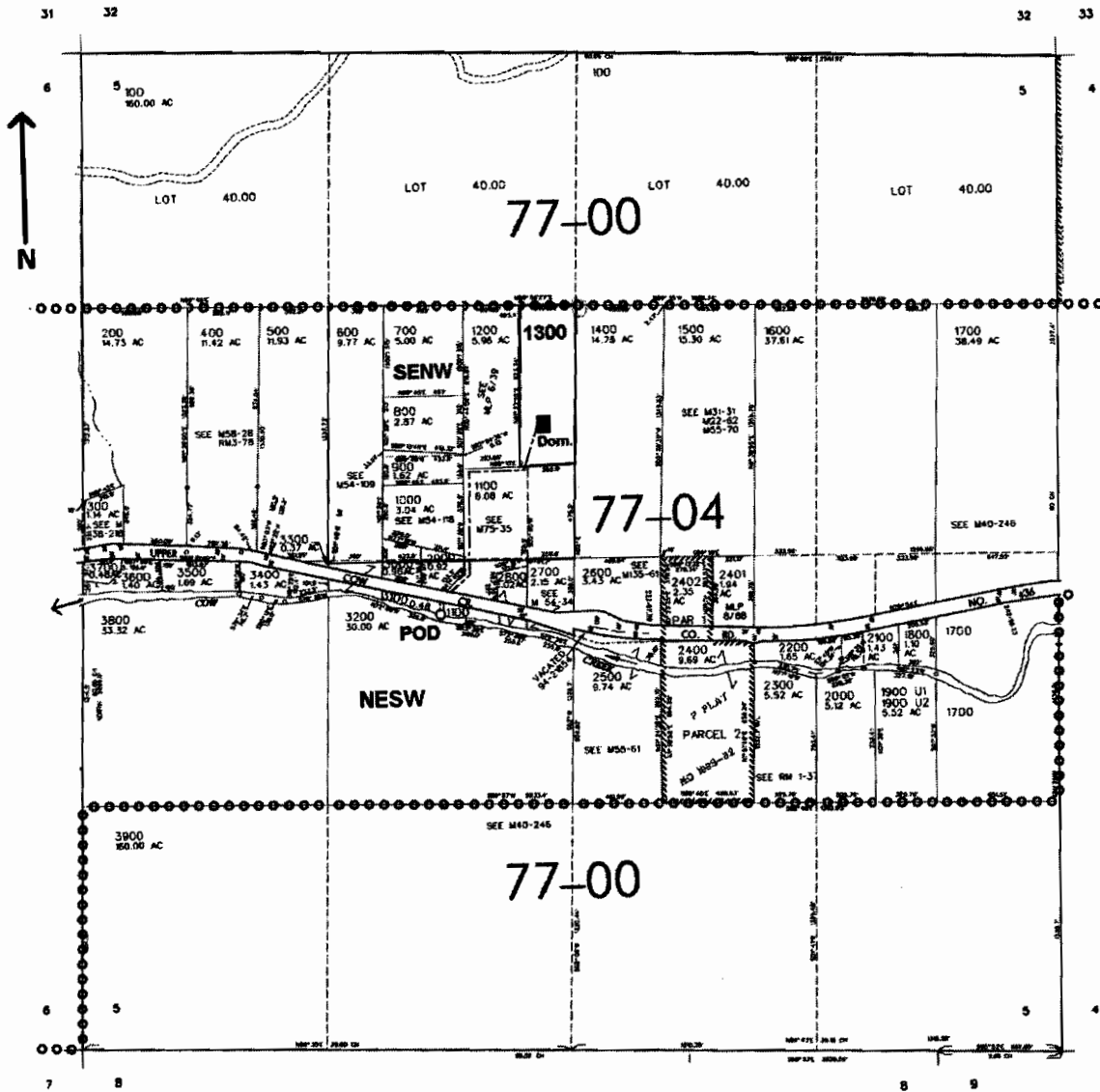


SEC. 5 T.32S. R.4 W. W.M.
DOUGLAS COUNTY

Scale: 1" = 1000'



POD is located 300 ft. S. and 1920 ft. E. from the W. 1/4 corner of Sec. 5

app # S86216

RECEIVED
MAR 25 2005
WATER RESOURCES DEPT
SALEM, OREGON