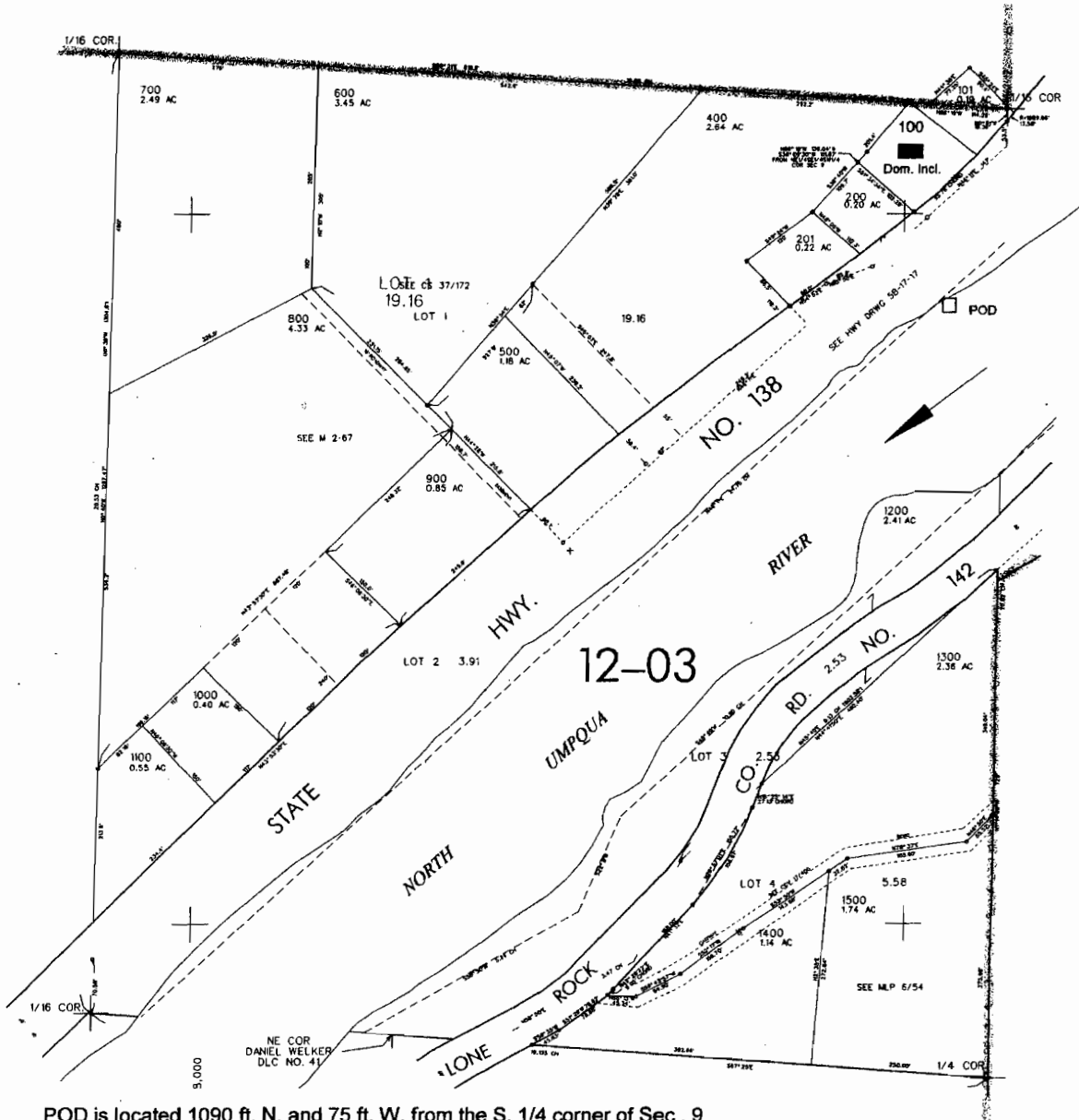


SE1/4 SW1/4 SEC. 9 T.26S. R. 3W W.M.
DOUGLAS COUNTY

Scale: 1" = 250'



POD is located 1090 ft. N. and 75 ft. W. from the S. 1/4 corner of Sec. 9

RECEIVED
JAN 22 2003
WATER RESOURCES DEPT.
SALEM, OREGON