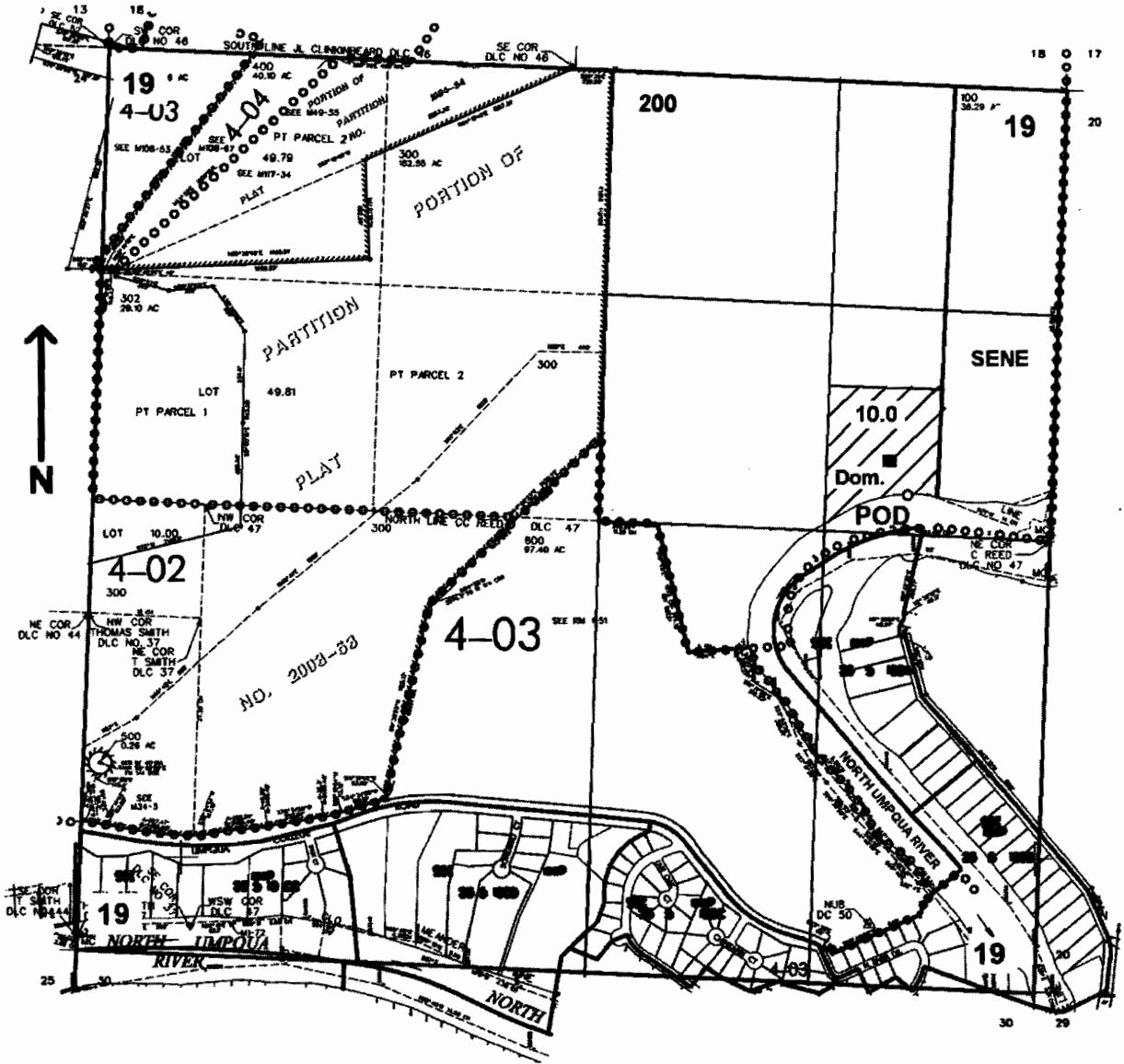


SEC. 19 T.26S. R.5 W. W.M.
DOUGLAS COUNTY

Scale: 1" = 1000'



POD is located 2300 ft. S. and 800 ft. W. from the NE corner of Sec. 19

app # 586265

RECEIVED
APR 19 2005
WATER RESOURCES DEPT
SALEM, OREGON