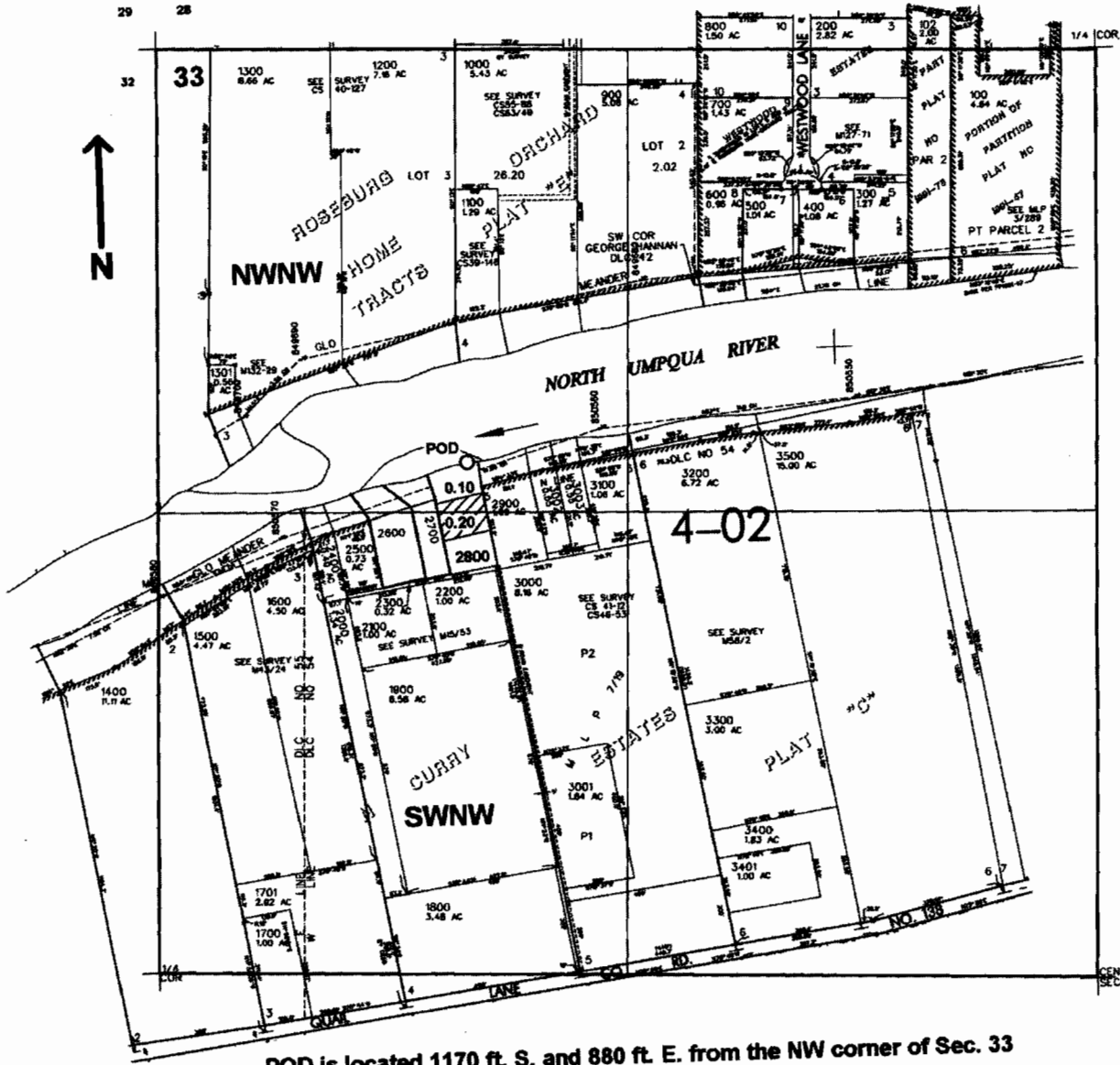


NW/4 SEC. 33 T.26S. R.6 W W.M.
DOUGLAS COUNTY

Scale: 1" = 500'



POD is located 1170 ft. S. and 880 ft. E. from the NW corner of Sec. 33

app # S 86251

RECEIVED
APR 12 2005
WATER RESOURCES DEPT
SALEM, OREGON