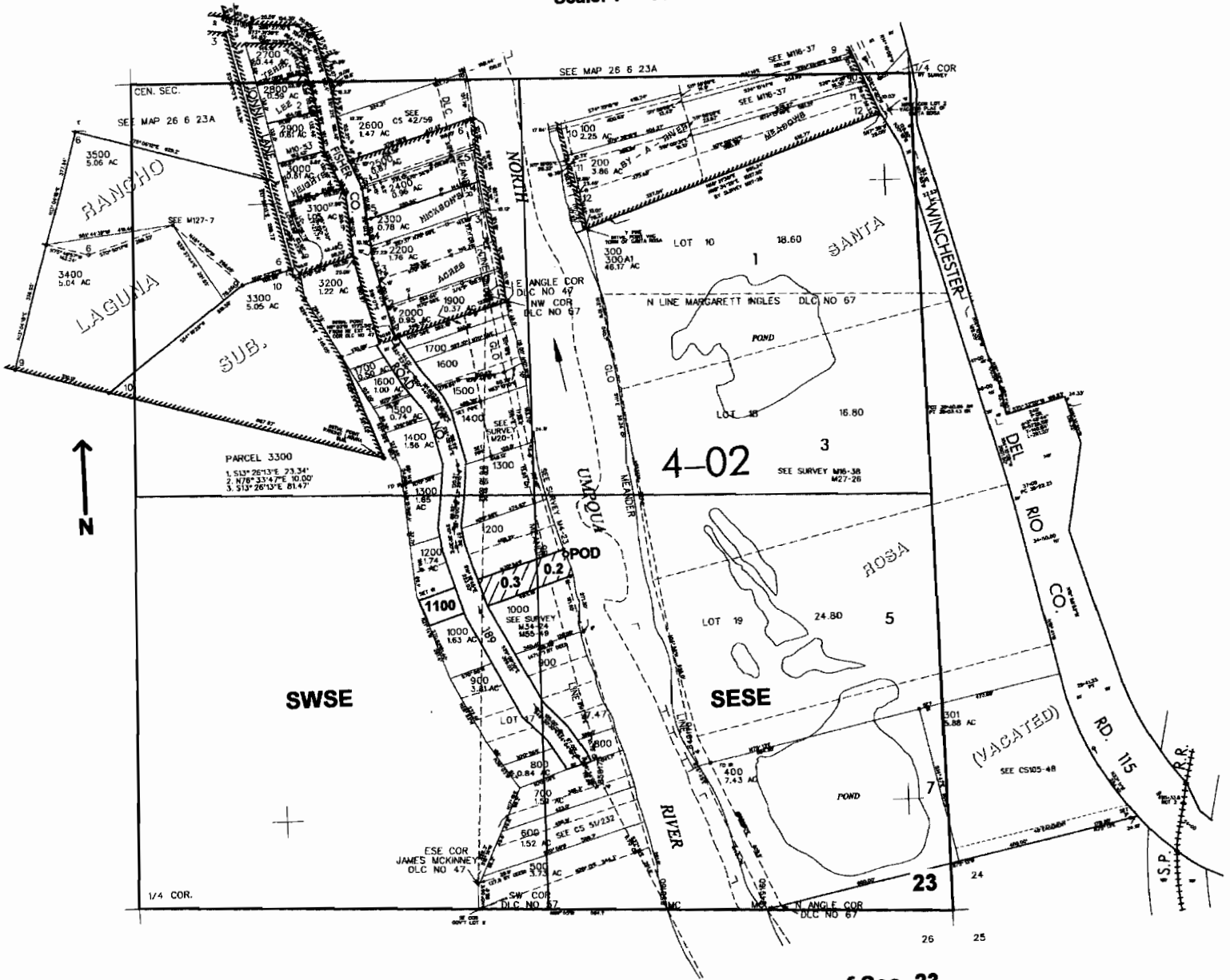


SEV4 SEC. 23 T.26S. R. 6W W.M.
DOUGLAS COUNTY
Scale: 1" = 500'



POD is located 1150 ft. N. and 1200 ft. W. from the SE corner of Sec. 23

app # 586247

RECEIVED
APR 11 2006
WATER RESOURCES DEPT.
SALEM, OREGON