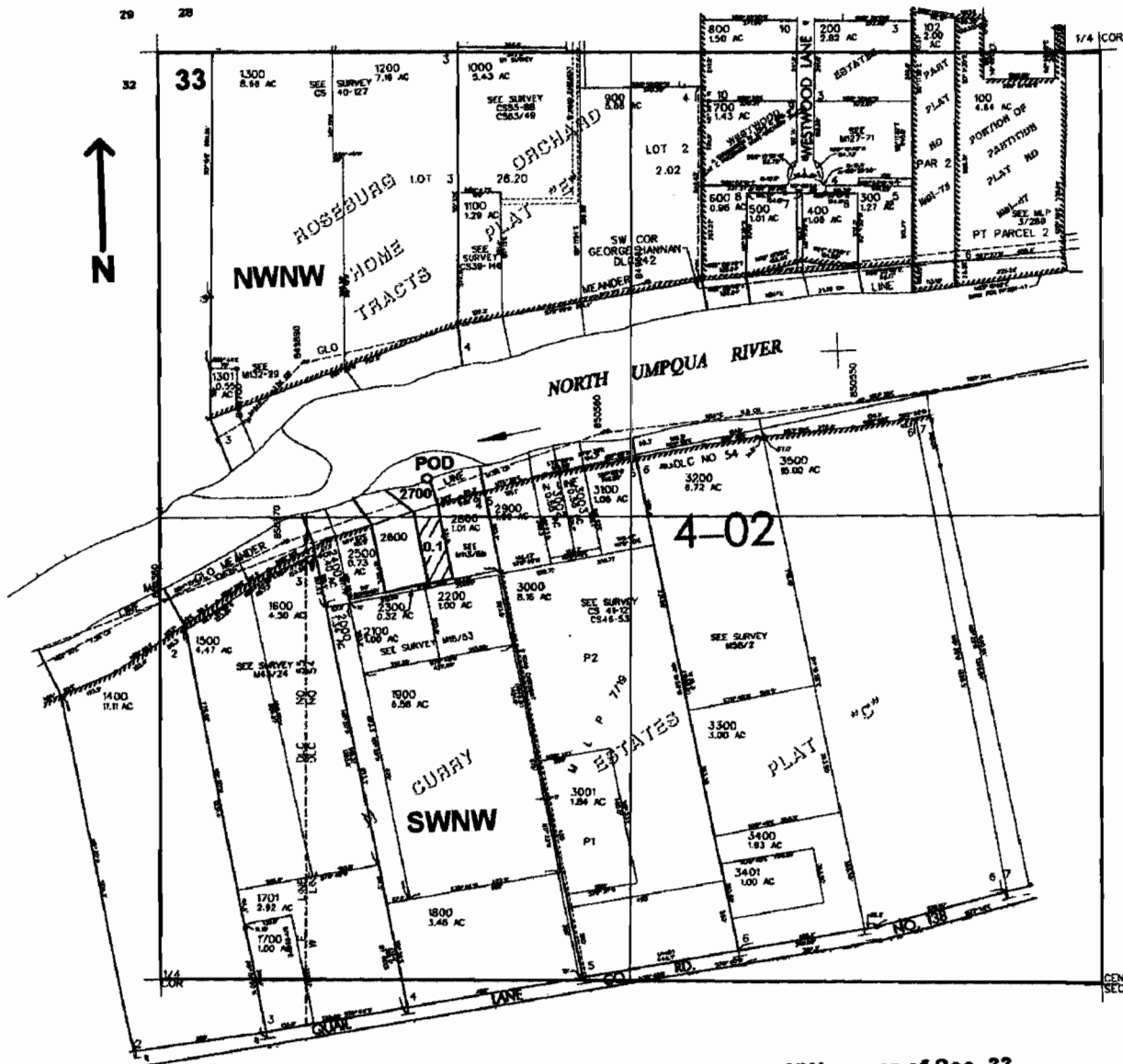


NW¼ SEC. 33 T.26S. R.6 W W.M.  
DOUGLAS COUNTY

Scale: 1" = 500'



POD is located 1200 ft. S. and 755 ft. E. from the NW corner of Sec. 33

app# S 86228

RECEIVED

APR 05 2005

WATER RESOURCES DEPT.  
SALEM, OREGON