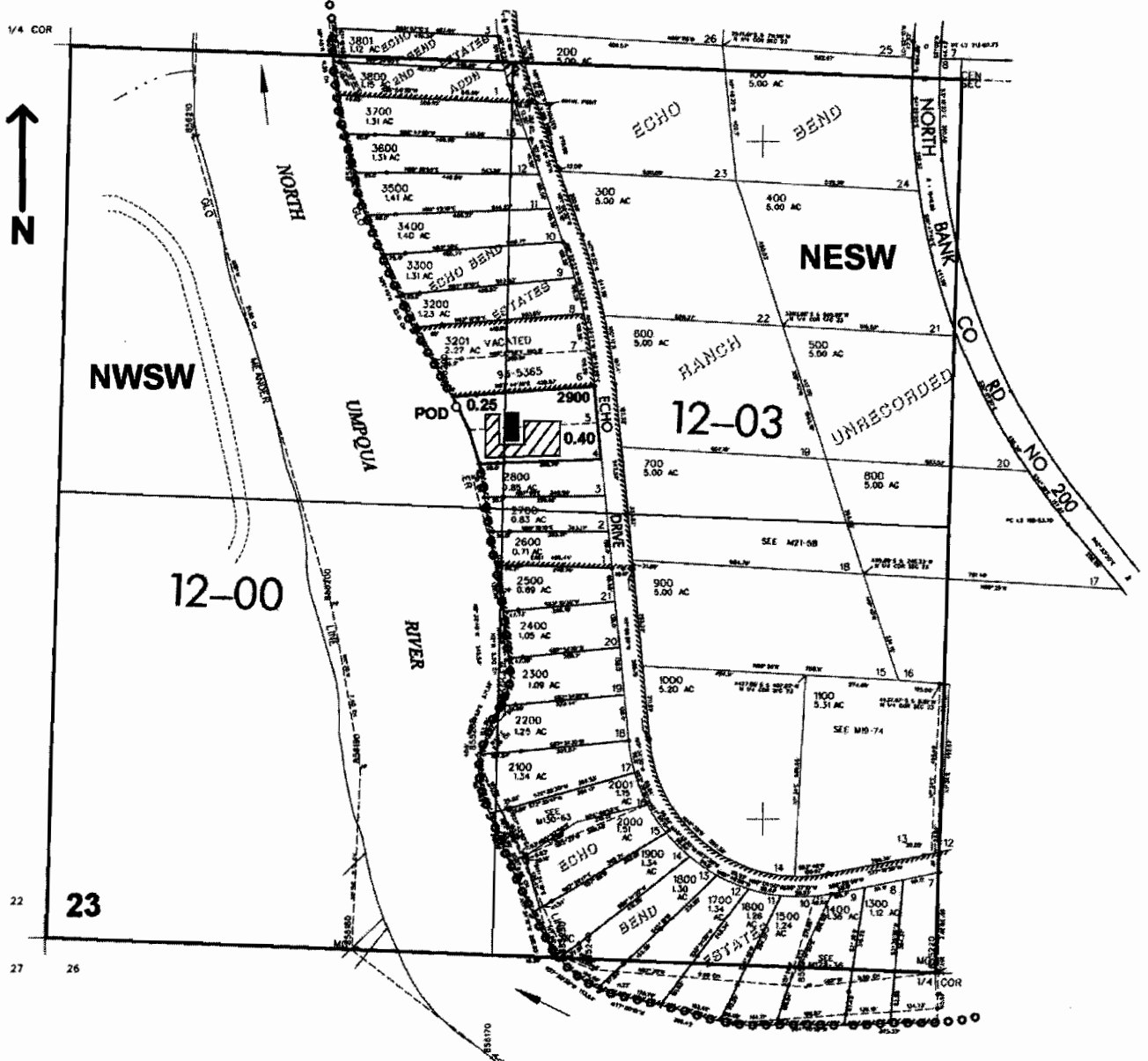


SW/4 SEC. 23 T.26S. R. 5W W.M.

DOUGLAS COUNTY

Scale: 1" = 500'



POD is located 1610 ft. N. and 1165 ft. E. from the SW corner of Sec. 23

app # S 86253

RECEIVED
APR 13 2005
WATER RESOURCES DEPT
SALEM, OREGON