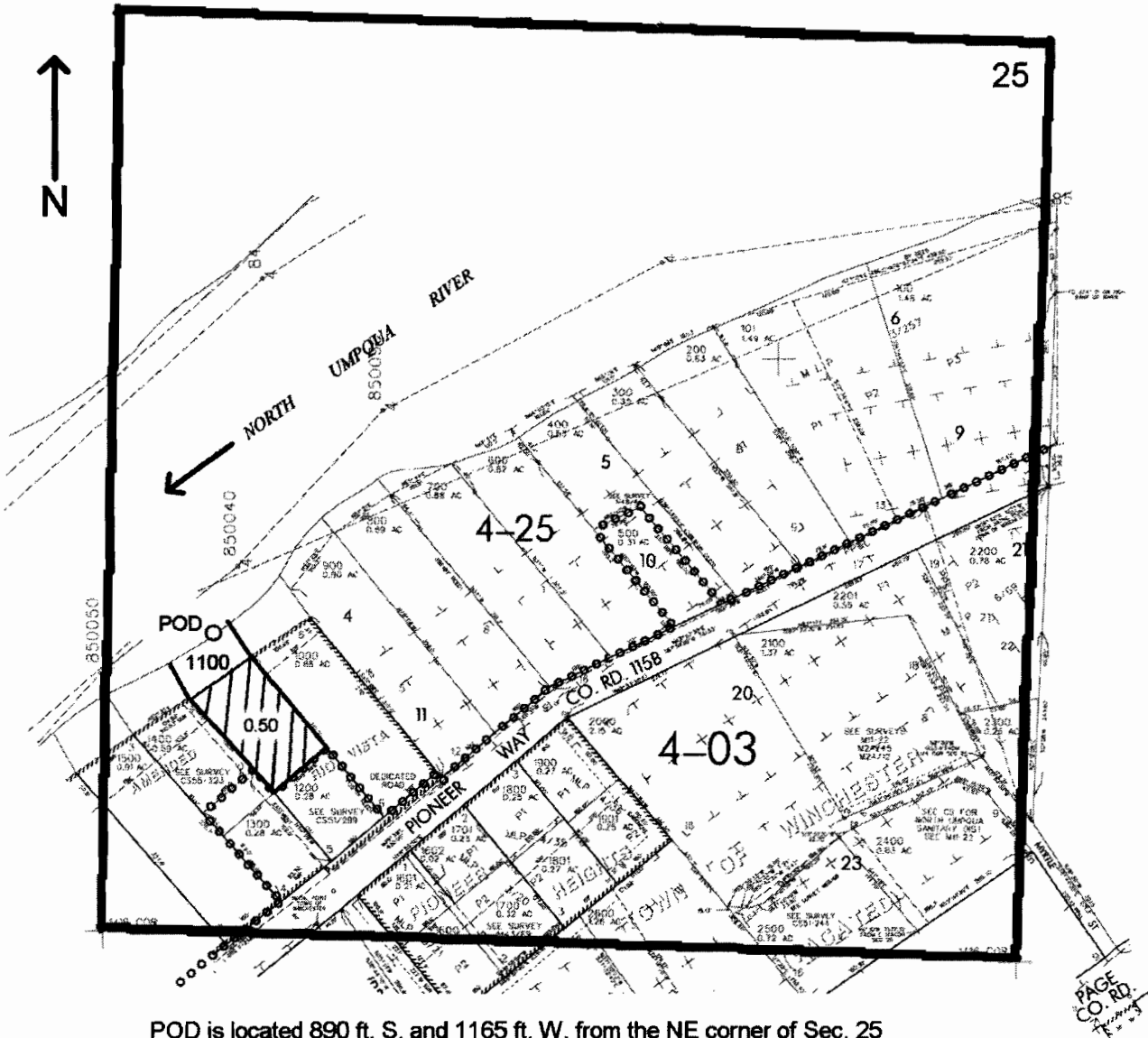


NE1/4 NE1/4 SEC. 25 T.26S. R. 6W W.M.
DOUGLAS COUNTY
Scale: 1" = 250'



POD is located 890 ft. S. and 1165 ft. W. from the NE corner of Sec. 25

app # S 86258

RECEIVED
APR 15 2005
WATER RESOURCES DEPT
SALEM, OREGON