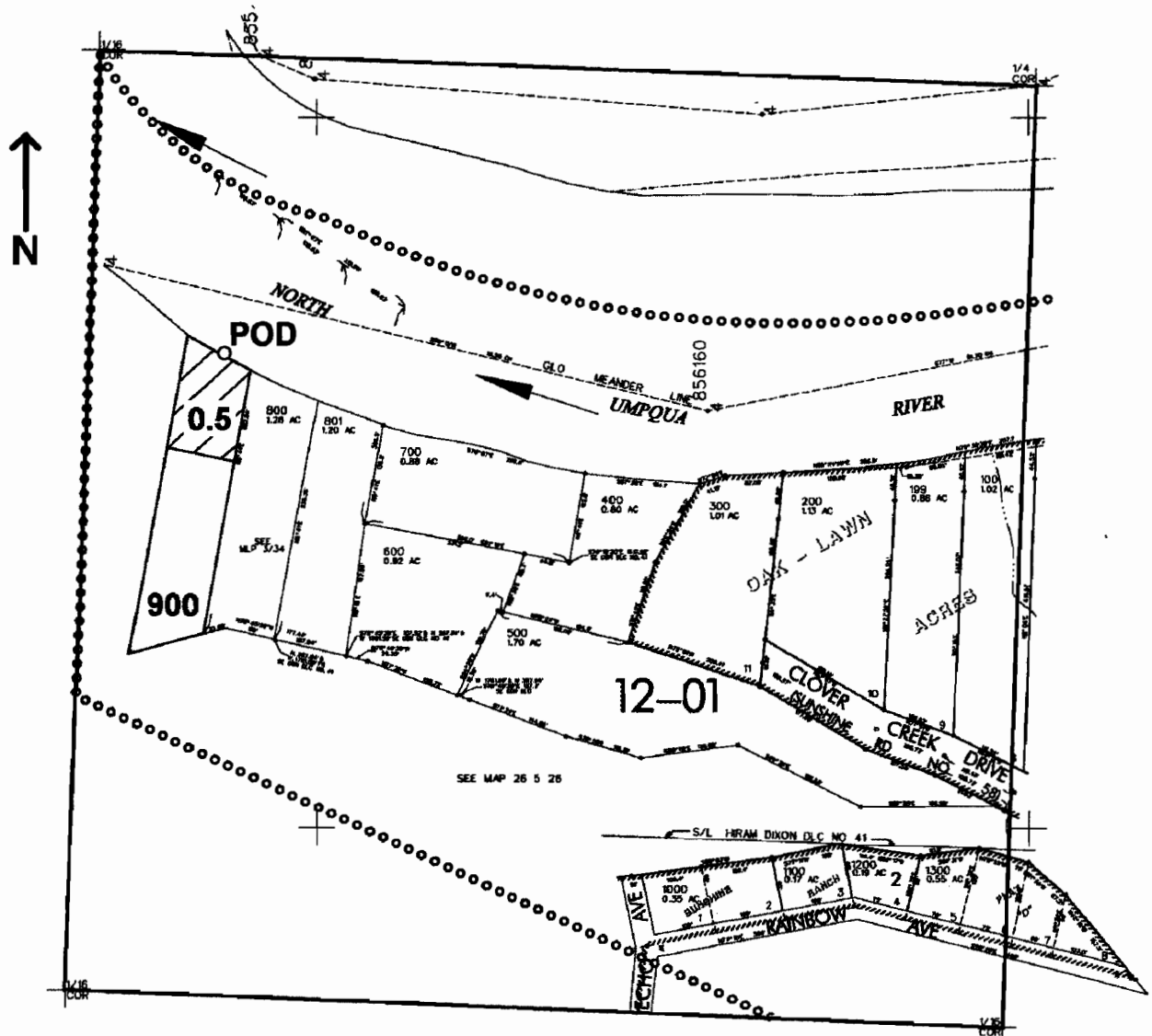


NE1/4 NW1/4 SEC. 26 T.26S. R.5 W W.M.
DOUGLAS COUNTY

Scale: 1" = 250'



POD is located 420 ft. S. and 1135 ft. W. from the N1/4 corner of Sec. 26

app # SB6296

RECEIVED
MAY 05 2005
WATER RESOURCES DEPT
SALEM, OREGON