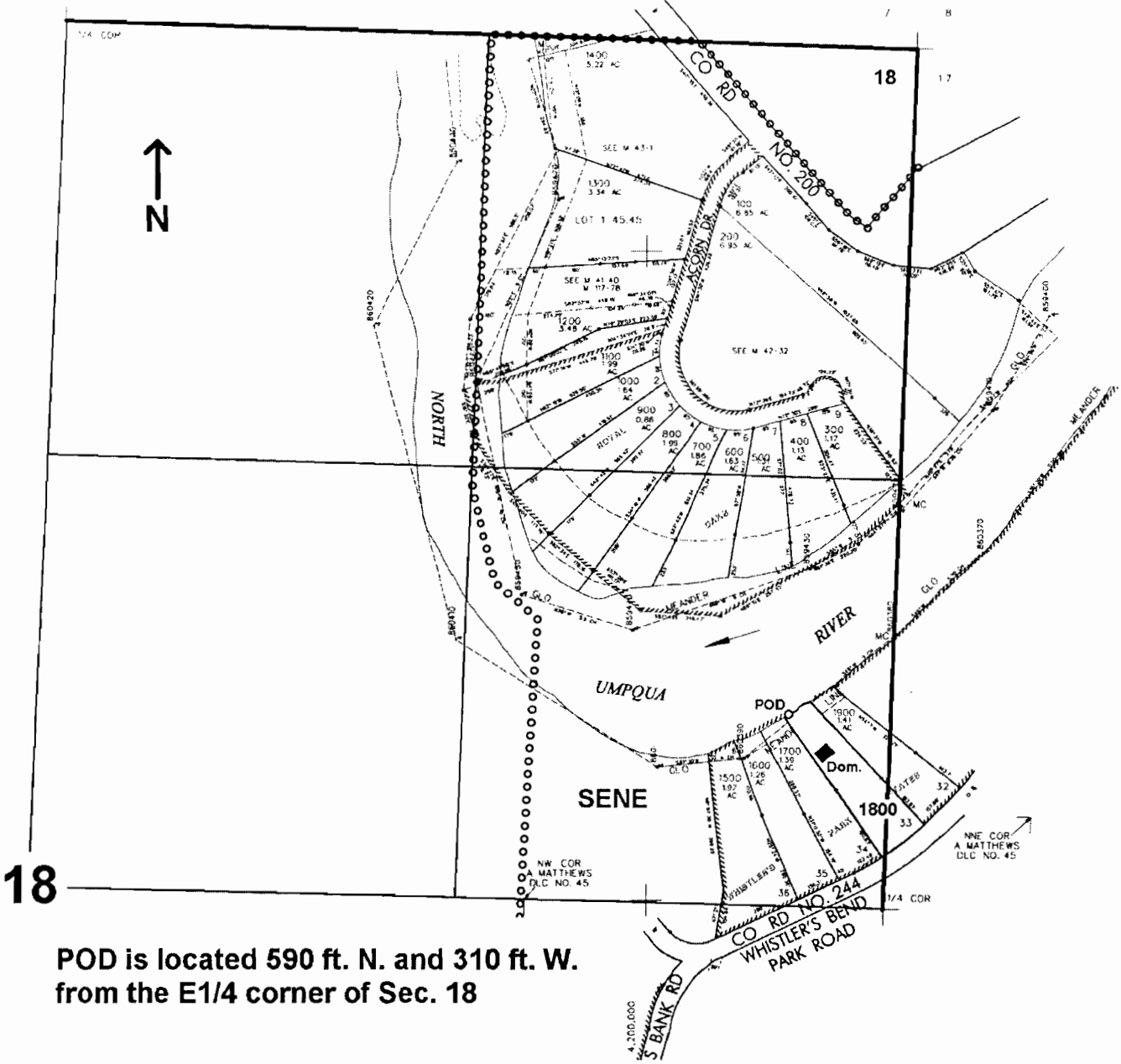


NE 1/4 SEC. 18 T.26S. R. 4W. W.M.
DOUGLAS COUNTY
Scale: 1" = 500'



POD is located 590 ft. N. and 310 ft. W.
from the E1/4 corner of Sec. 18

RECEIVED
JUN 08 2005
WATER RESOURCES DEPT
SALEM, OREGON

App No S-86329