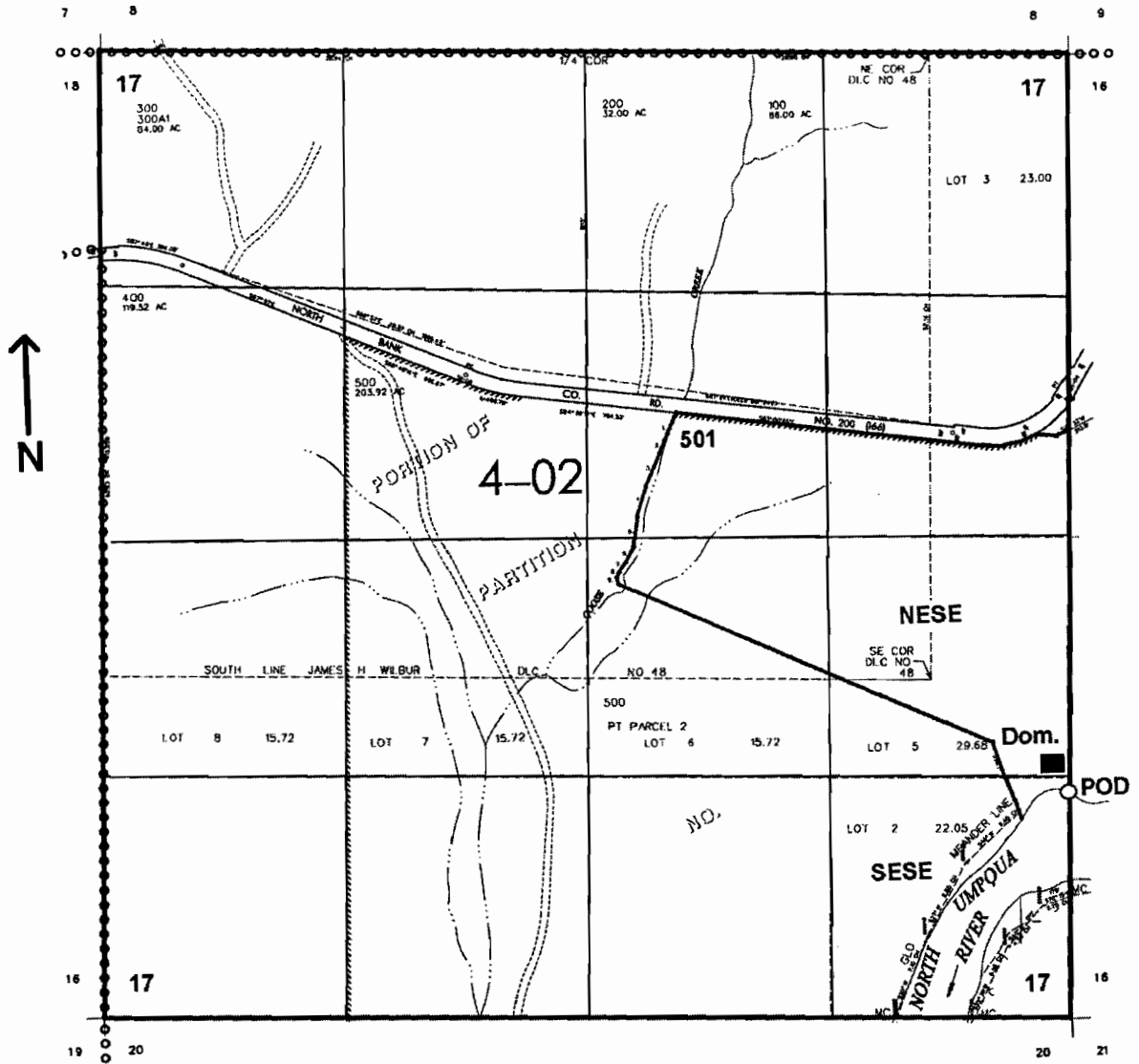


SEC. 17 T.26S. R.5 W W.M.  
DOUGLAS COUNTY  
Scale: 1" = 1000'



POD is located 1220 ft. N. from the SE corner of Sec. 17

**RECEIVED**  
JUN 07 2006  
WATER RESOURCES DEPT  
SALEM, OREGON

App No  
S-86333