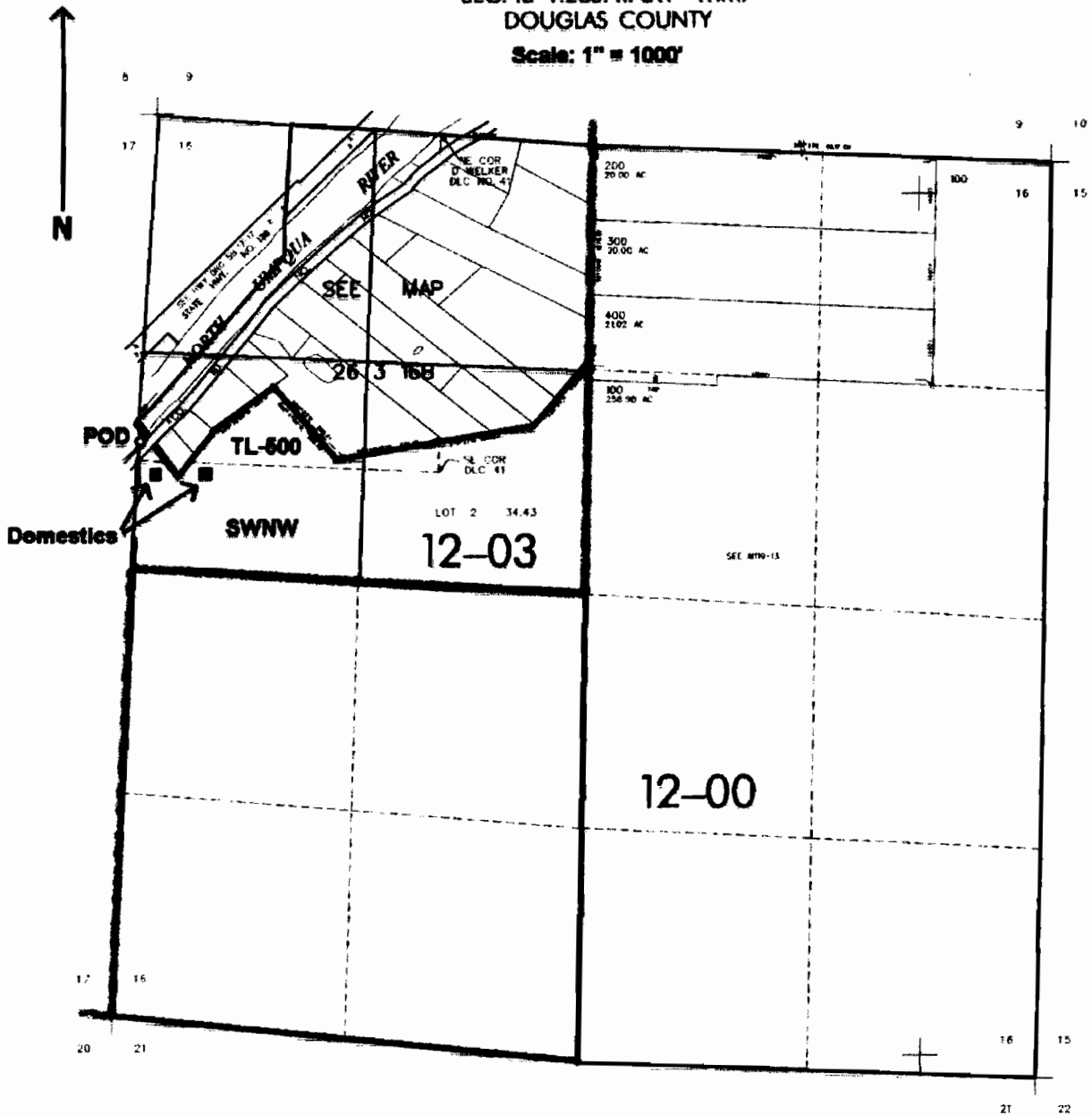


SEC. 16 T.26S. R. 3W W.M.  
DOUGLAS COUNTY  
Scale: 1" = 1000'



POD is located 1880 ft. S. and 25 ft. E. from the NW corner of Sec. 16

**RECEIVED**

FEB 19 2004

WATER RESOURCES DEPT  
SALEM, OREGON

**RECEIVED**

DEC 22 2003

WATER RESOURCES DEPT  
SALEM, OREGON

**IVED**

2003

JRCES DEPT  
OREGON

App No S-85939