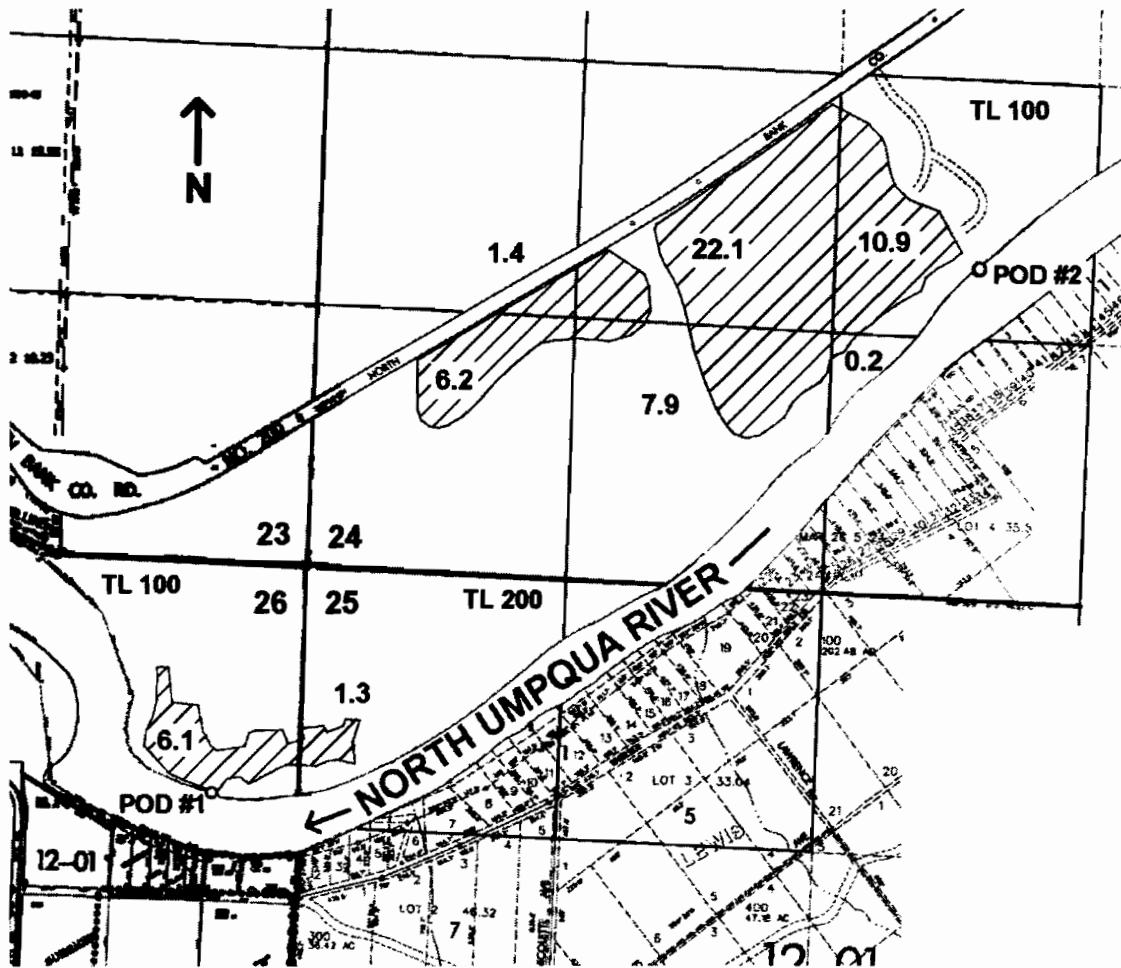


T. 26 S., R. 5 W., W. M.
DOUGLAS COUNTY

Scale: 1" = 1000'



POD #1 - 1200 ft. S. and 450 ft. W. }

from the NE corner of Sec. 26

POD #2 - 1720 ft. N. and 3430 ft. E. }

app # 586306

RECEIVED
MAY 16 2005
WATER RESOURCES DEPT
SALEM, OREGON