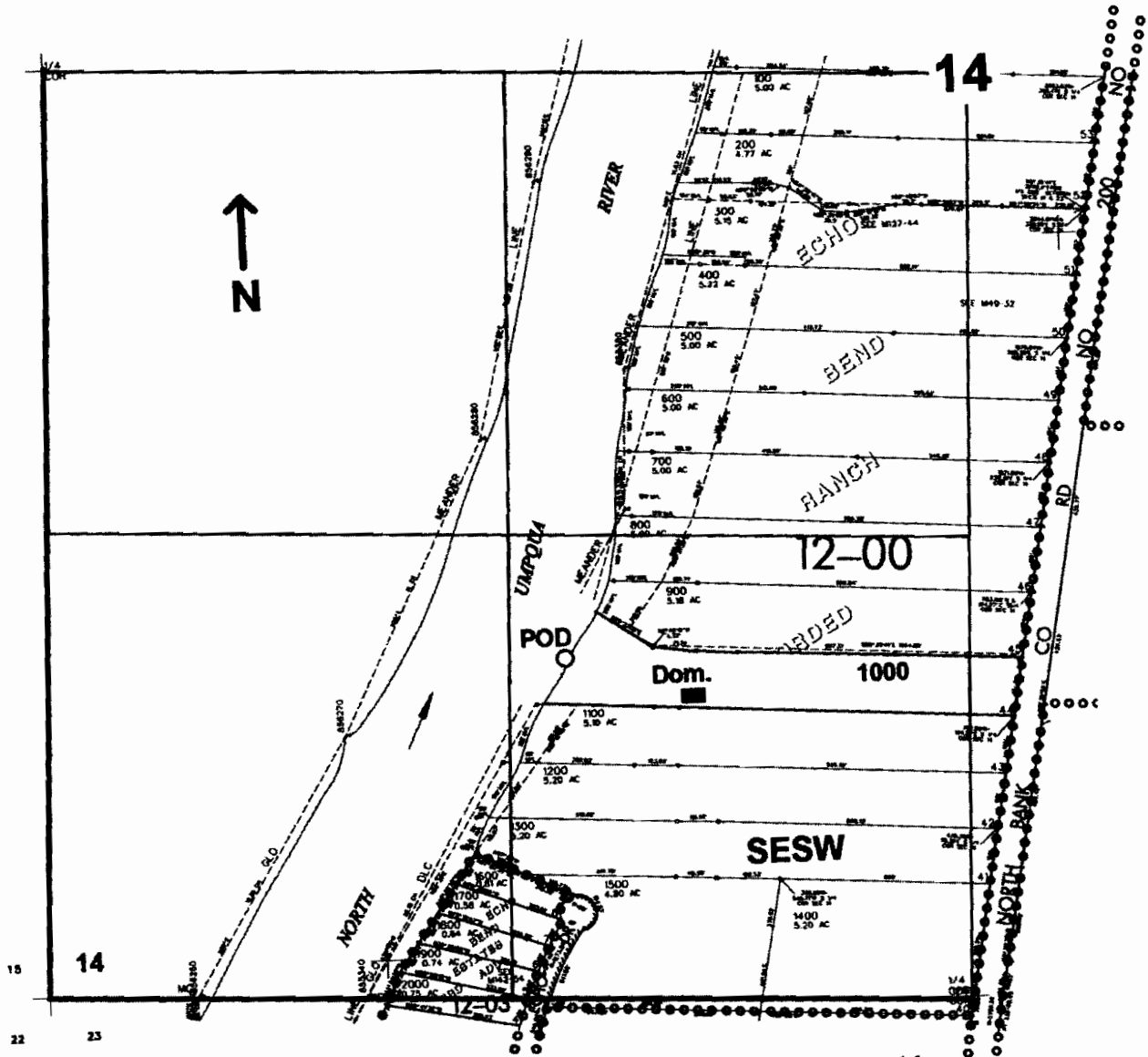


SW1/4 SEC. 14 T.26S. R.5 W W.M.
DOUGLAS COUNTY
Scale: 1" = 500'



POD is located 970 ft. N. and 1150 ft. W. from the S1/4 corner of Sec. 14

app # S 86319

RECEIVED

MAY 25 2005

WATER RESOURCES DEPT
SALEM, OREGON