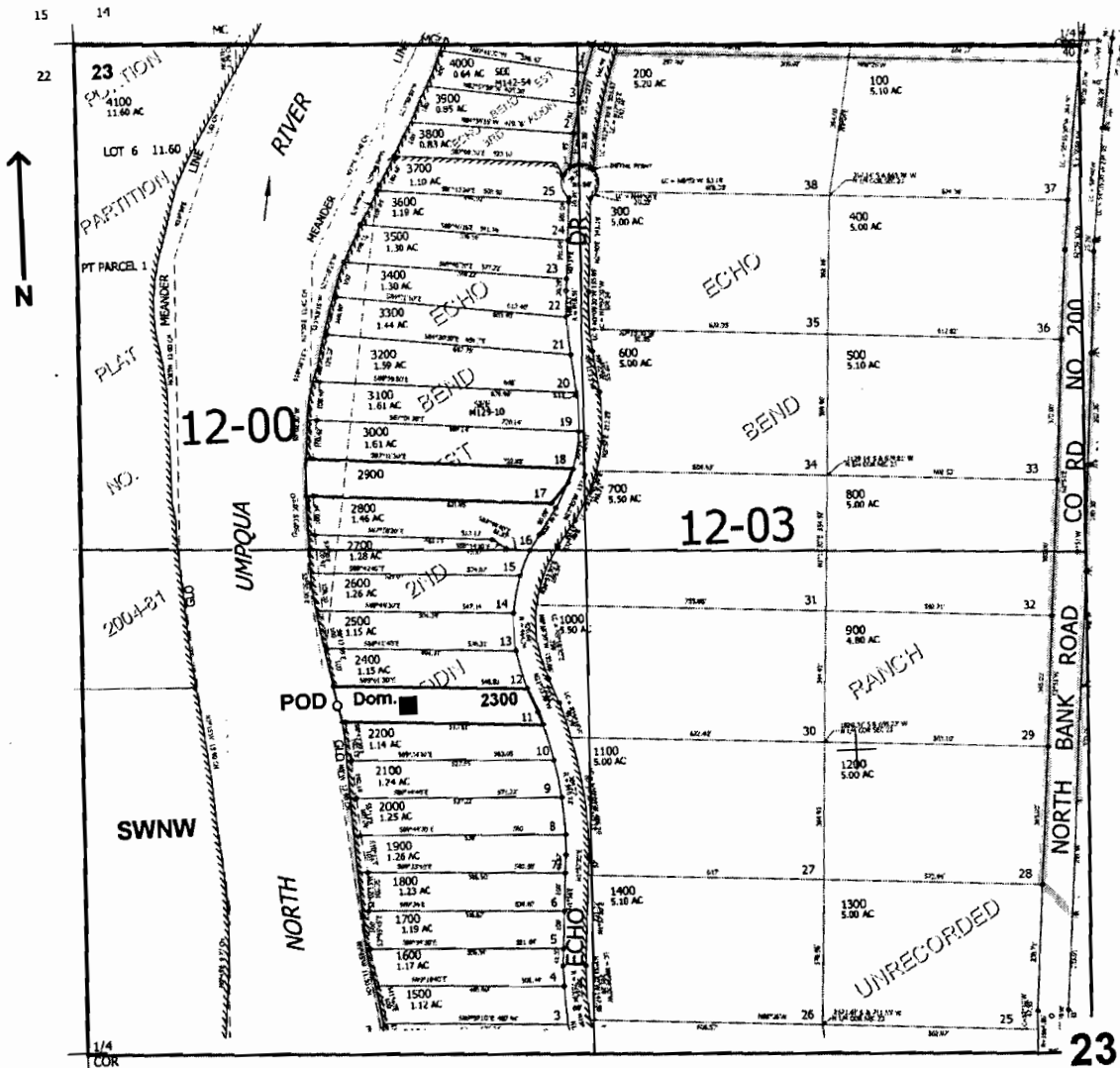


RECEIVED

MAY 27 2005

WATER RESOURCES DEPT  
SALEM, OREGON

NW1/4 SEC.23 T.26S. R.5W. W.M.  
DOUGLAS COUNTY  
Scale: 1" = 500'



POD is located 910 ft. N. and 670 ft. E. from the W1/4 corner of Sec. 23

app # 586323