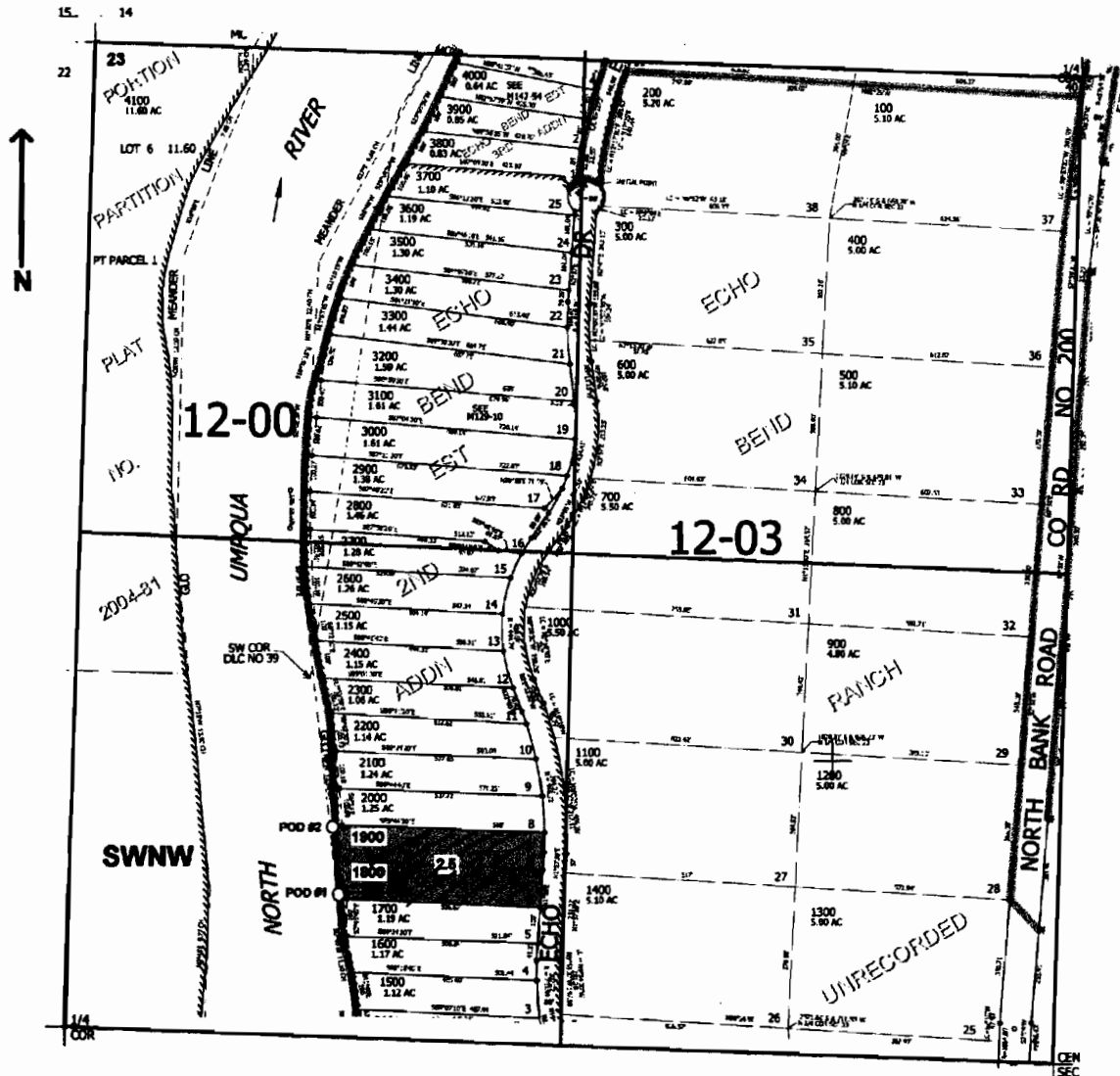


NW1/4 SEC.23 T.26S. R.5W. W.M.

DOUGLAS COUNTY

Scale: 1" = 500'



POD #1 is located 380 ft. N. and 720 ft. E. }
from the W.1/4 corner of Sec. 23
POD #2 is located 550 ft. N. and 700 ft. E. }

WORK COPY

app # S 86208

RECEIVED

MAR 22 2005

WATER RESOURCES DEPT
SALEM, OREGON

POE