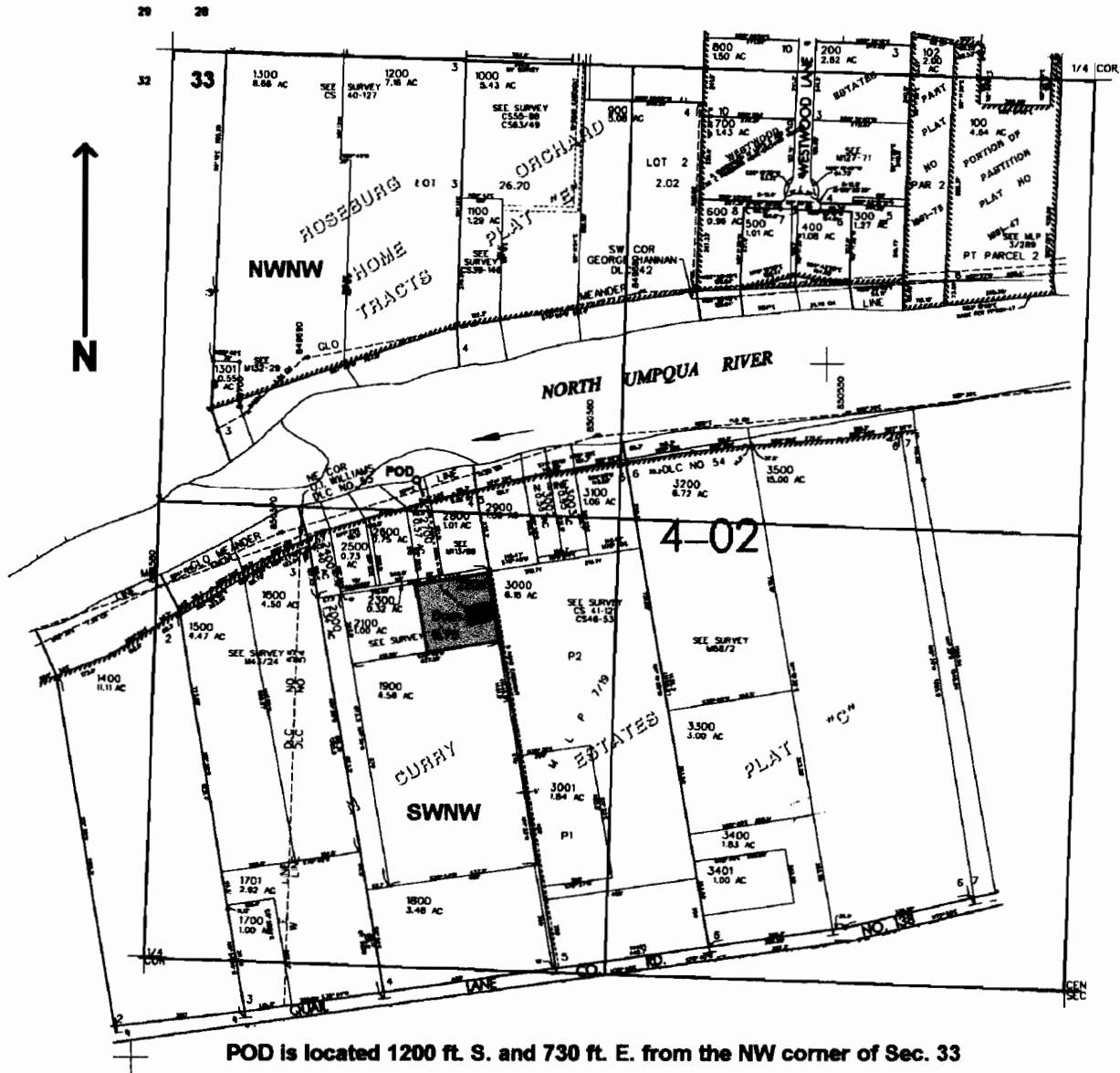


NW/4 SEC. 33 T.26S. R.6 W W.M.  
DOUGLAS COUNTY

Scale: 1" = 500'



POD is located 1200 ft. S. and 730 ft. E. from the NW corner of Sec. 33

**RECEIVED**  
MAR 29 2005  
WATER RESOURCES DEPT  
SALEM, OREGON

app # S 86219