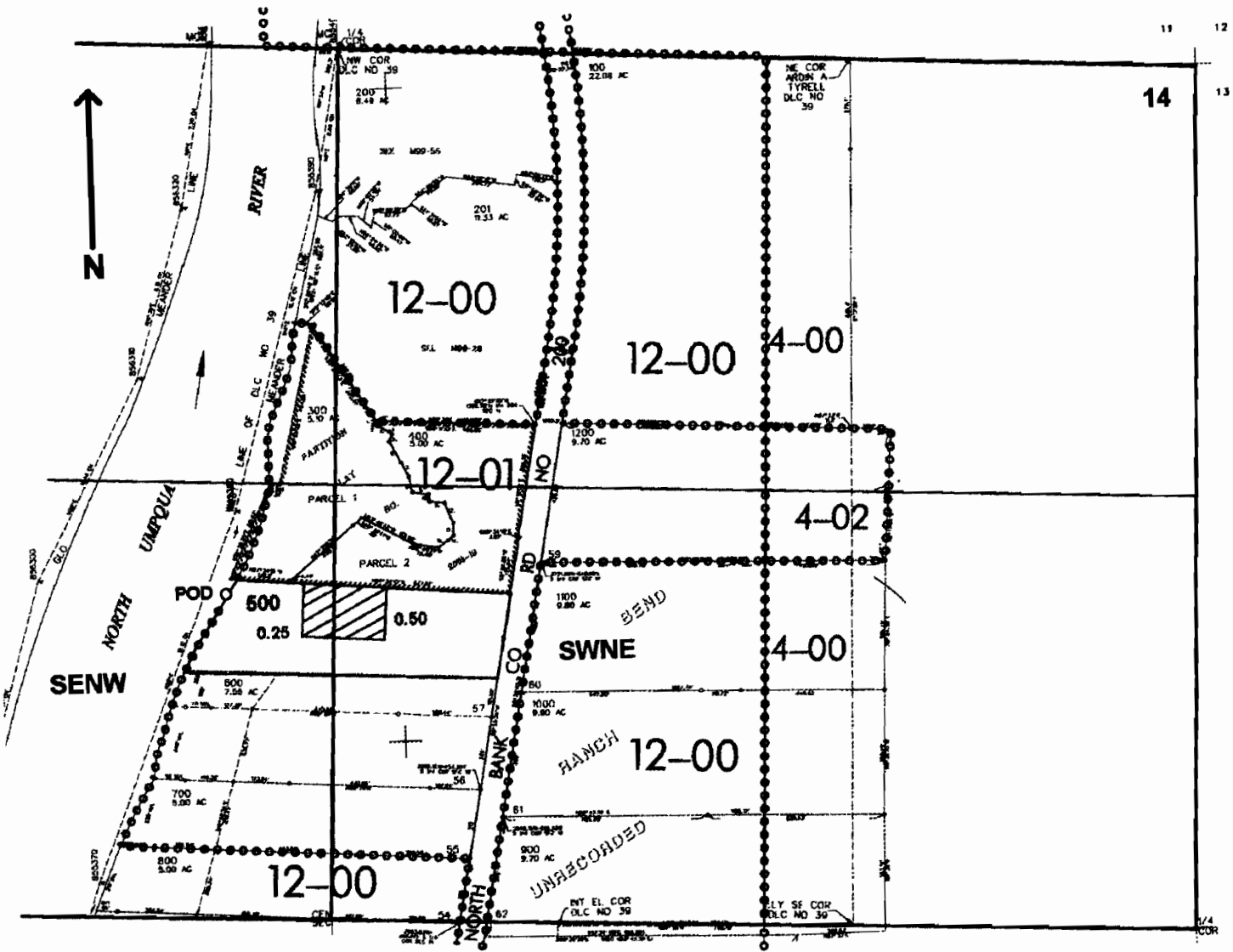


SEC. 14 T.26S. R.5 W. W.M.
DOUGLAS COUNTY
Scale: 1" = 500'



POD is located 990 ft. N. and 335 ft. W. from the center of Sec. 14

Appl. 5-86229

RECEIVED
APR 05 2005
WATER RESOURCES DEPT.
SALEM, OREGON