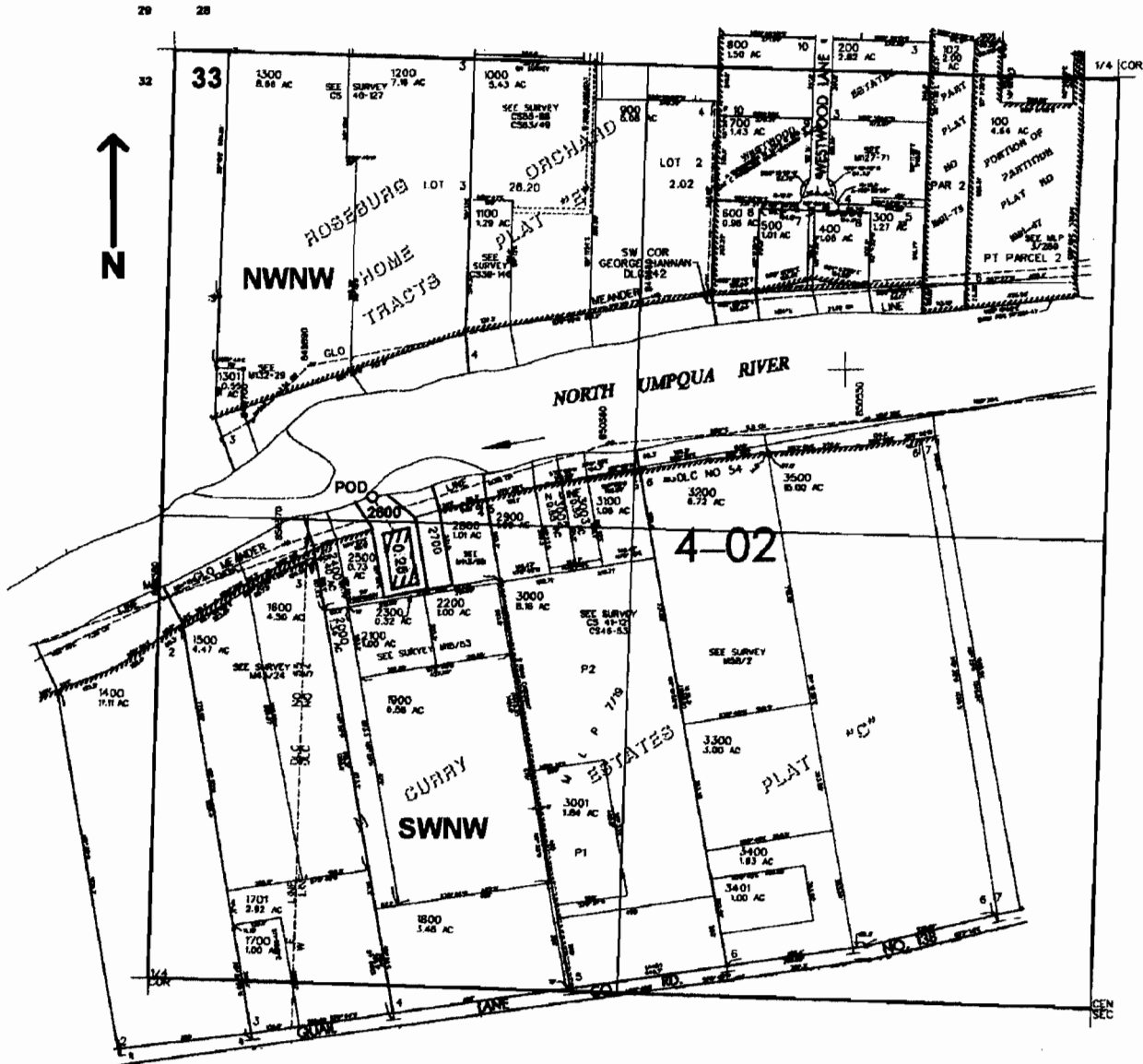


NW/4 SEC. 33 T.26S. R.6 W W.M.  
DOUGLAS COUNTY

Scale: 1" = 500'



POD is located 1250 ft. S. and 600 ft. E. from the NW corner of Sec. 33

app # S86236

**RECEIVED**

APR 06 2005

WATER RESOURCES DEPT  
SALEM, OREGON