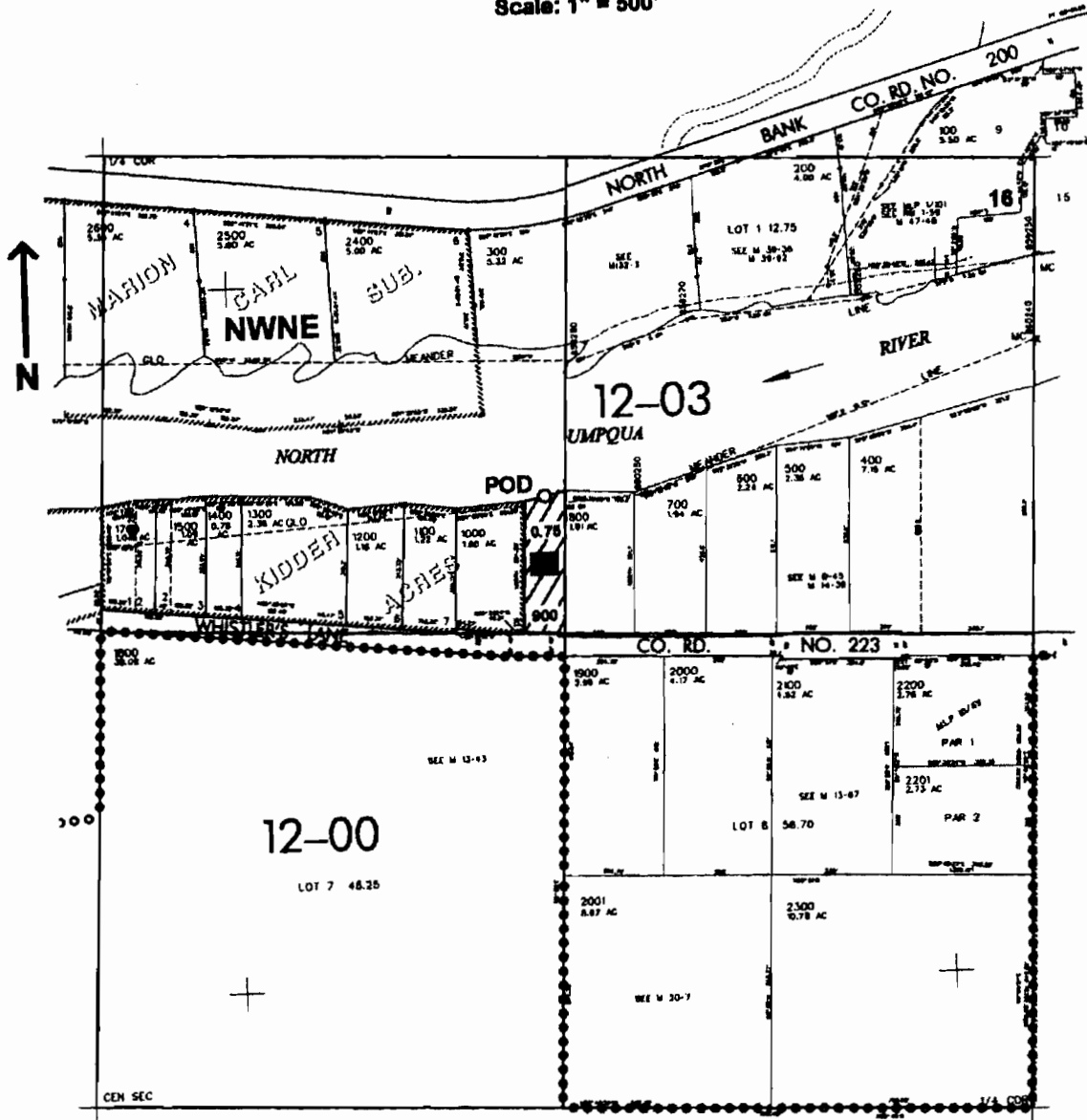


NE1/4 SEC. 16 T.26S. R. 4W. W.M.
 DOUGLAS COUNTY
 Scale: 1" = 500'



POD is located 960 ft. S. and 1380 ft. W. from the NE corner of Sec. 16

app # S86244

RECEIVED
 APR 07 2005
 WATER RESOURCES DEPT
 SALEM, OREGON