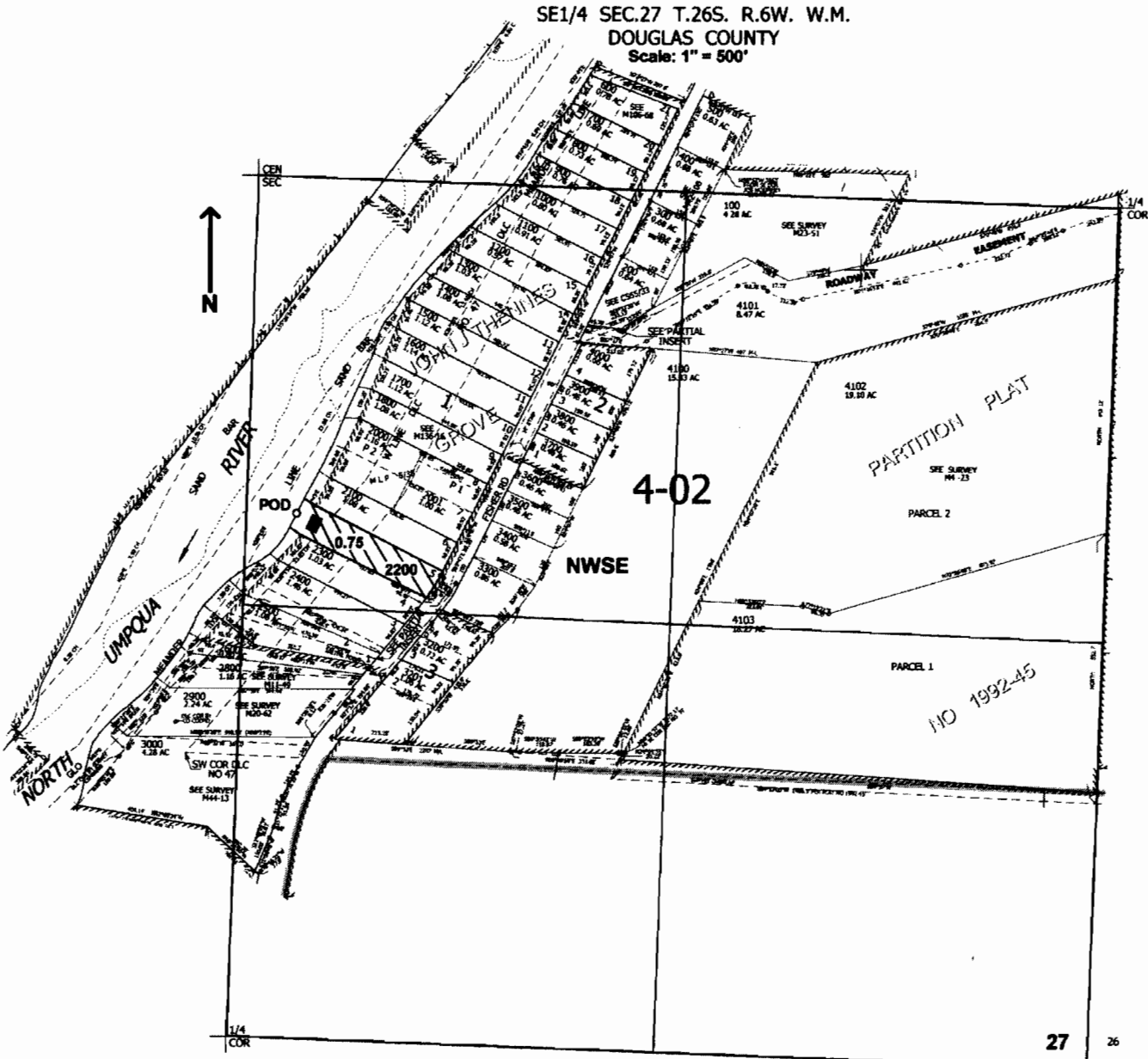


SE1/4 SEC.27 T.26S. R.6W. W.M.
DOUGLAS COUNTY
Scale: 1" = 500'



POD is located 1020 ft. S. and 150 ft. E. from the center of Sec. 27

app # 586246

RECEIVED
APR 11 2005
WATER RESOURCES DEPT
SALEM, OREGON