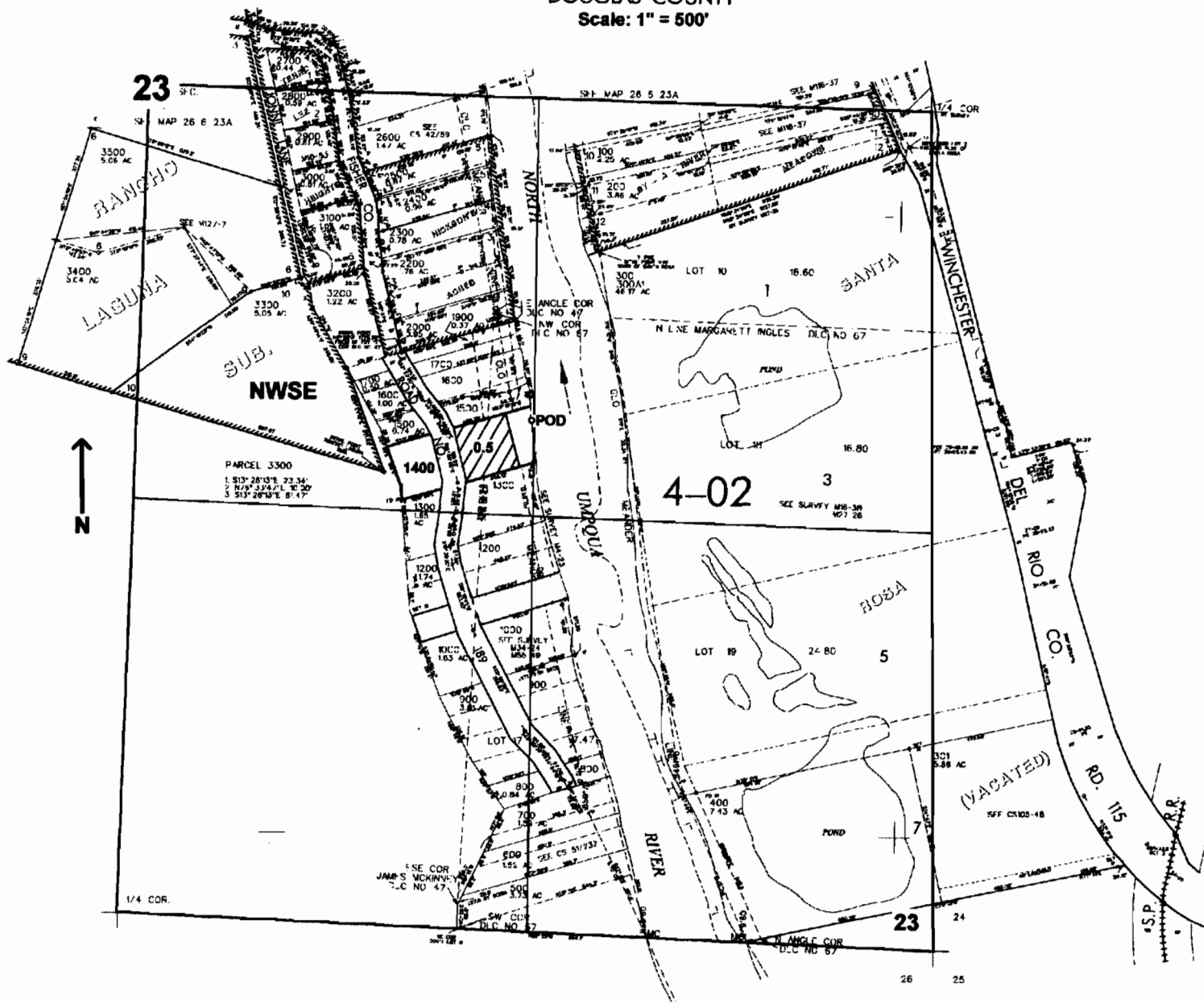


SE1/4 SEC. 23 T.26S. R. 6W W.M.
 DOUGLAS COUNTY
 Scale: 1" = 500'



POD is located 1040 ft. S. and 1285 ft. E. from the center of Sec. 23

app # S 86250

RECEIVED
 APR 12 2005
 WATER RESOURCES DEPT
 SALEM, OREGON