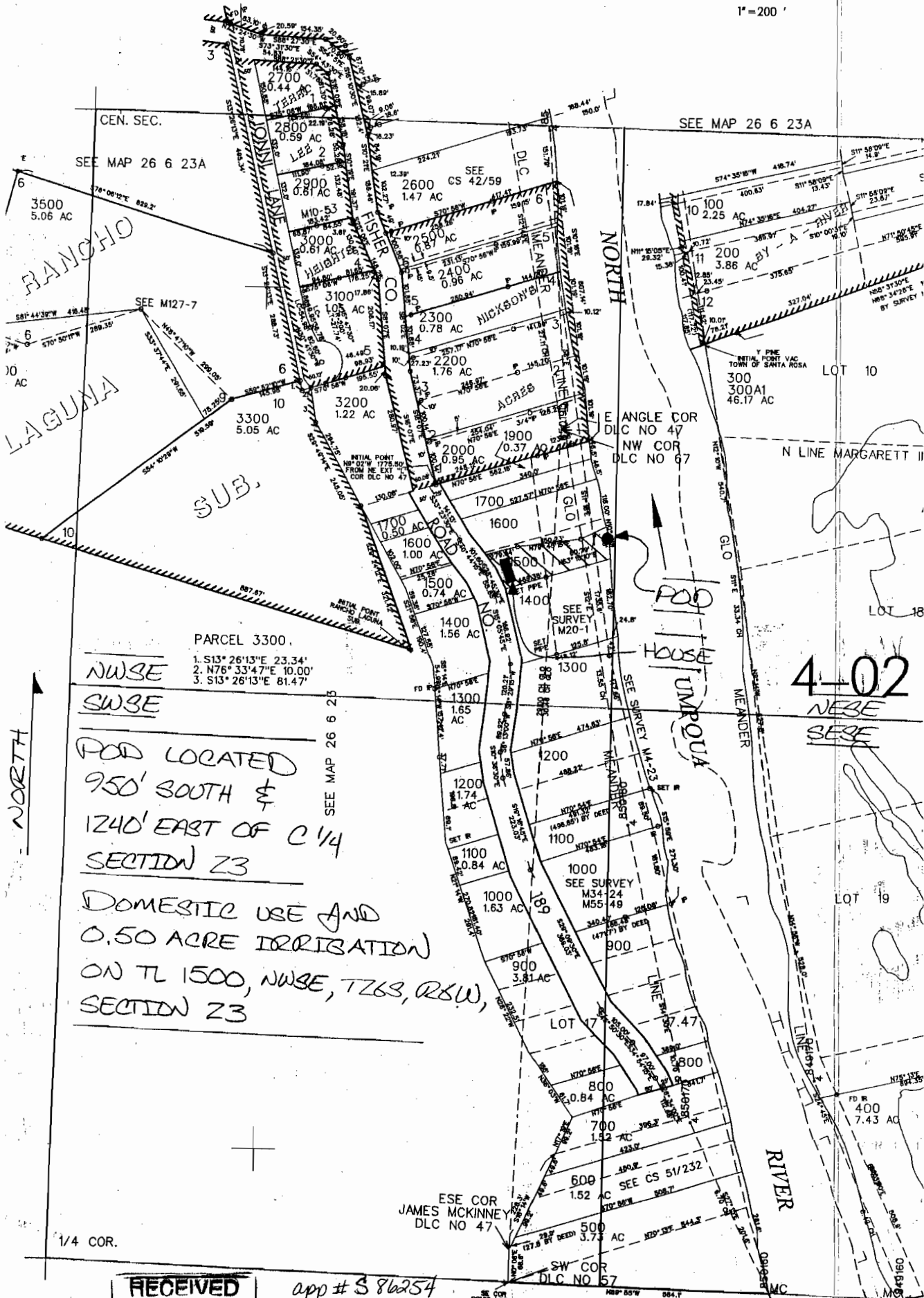


THIS MAP WAS PREPARED FOR
ASSESSMENT PURPOSE ONLY

SEV4 SEC. 23 T.26S. R. 6W DOUGLAS COUNTY

1" = 200'



PARCEL 3300.

- 1. S13° 26' 13" E 23.34'
- 2. N76° 33' 47" E 10.00'
- 3. S13° 26' 13" E 81.47'

NWSE
SWSE

POD LOCATED
950' SOUTH &
1240' EAST OF C 14
SECTION 23

DOMESTIC USE AND
0.50 ACRE IRRIGATION
ON TL 1500, NWSE, T26S, R6W,
SECTION 23

4-02
NESE
SESE

NORTH

RECEIVED
APR 13 2005
WATER RESOURCES DEPT
SALEM, OREGON

app # S 86254

000' LOT 8

5F