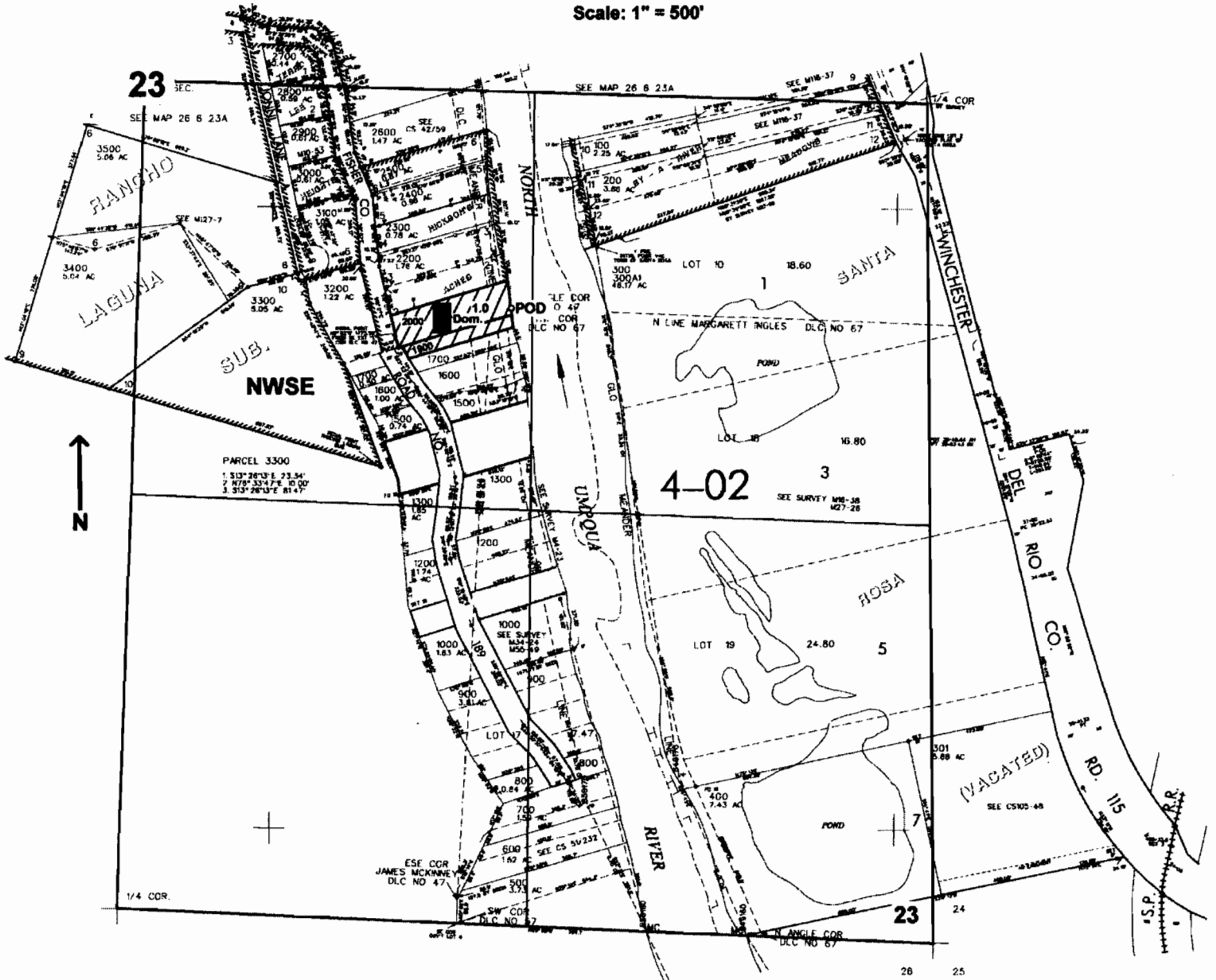


SEV4 SEC. 23 T.26S. R. 6W W.M.
DOUGLAS COUNTY
Scale: 1" = 500'



POD is located 710 ft. S. and 1230 ft. E. from the center of Sec. 23

app # S 86256

RECEIVED
APR 14 2005
WATER RESOURCES DEPT.
SALEM, OREGON