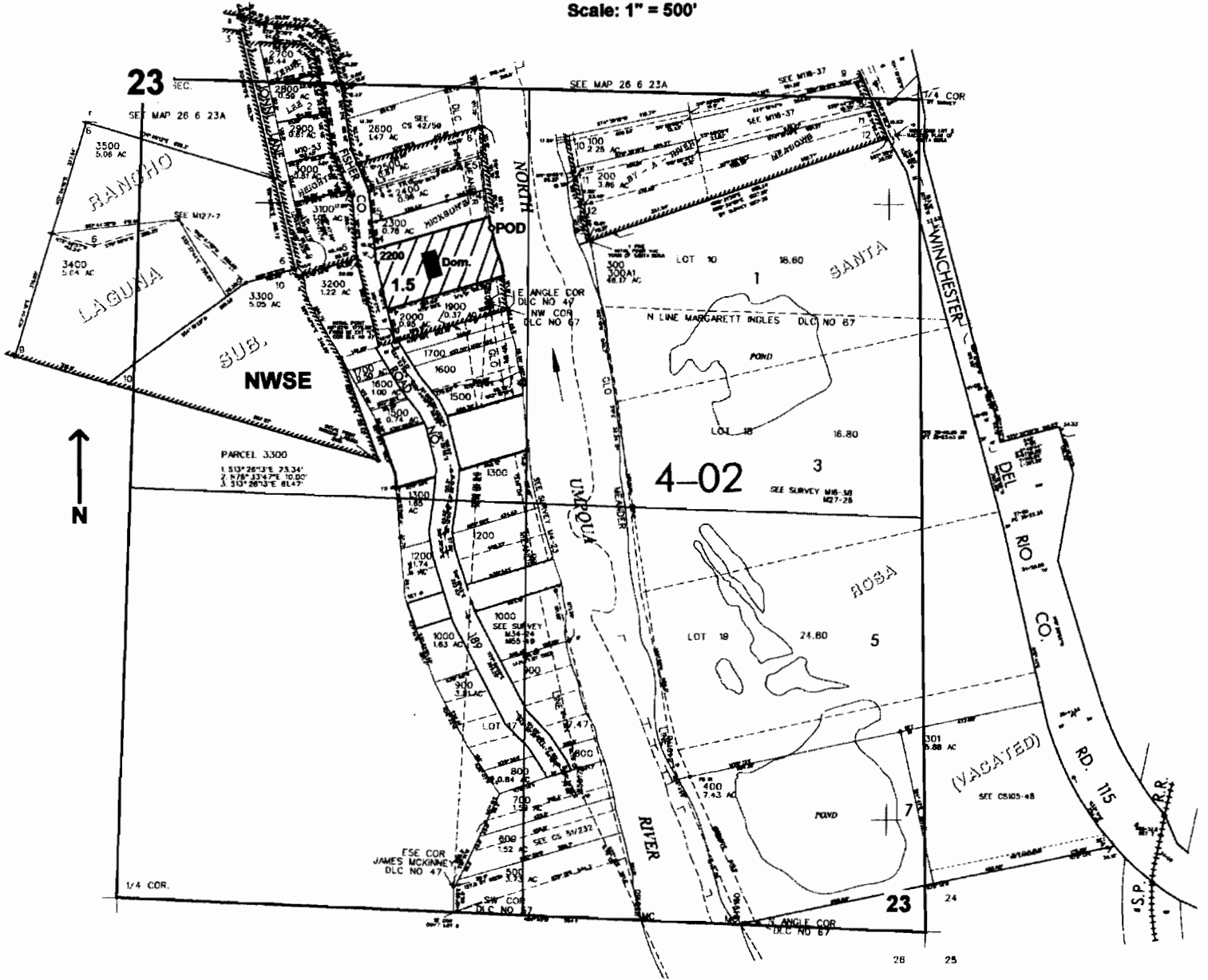


SE1/4 SEC. 23 T.26S. R. 6W W.M.
 DOUGLAS COUNTY
 Scale: 1" = 500'



POD is located 455 ft. S. and 1150 ft. E. from the center of Sec. 23

app # 586260

RECEIVED
 APR 15 2005
 WATER RESOURCES DEPT
 SALEM, OREGON