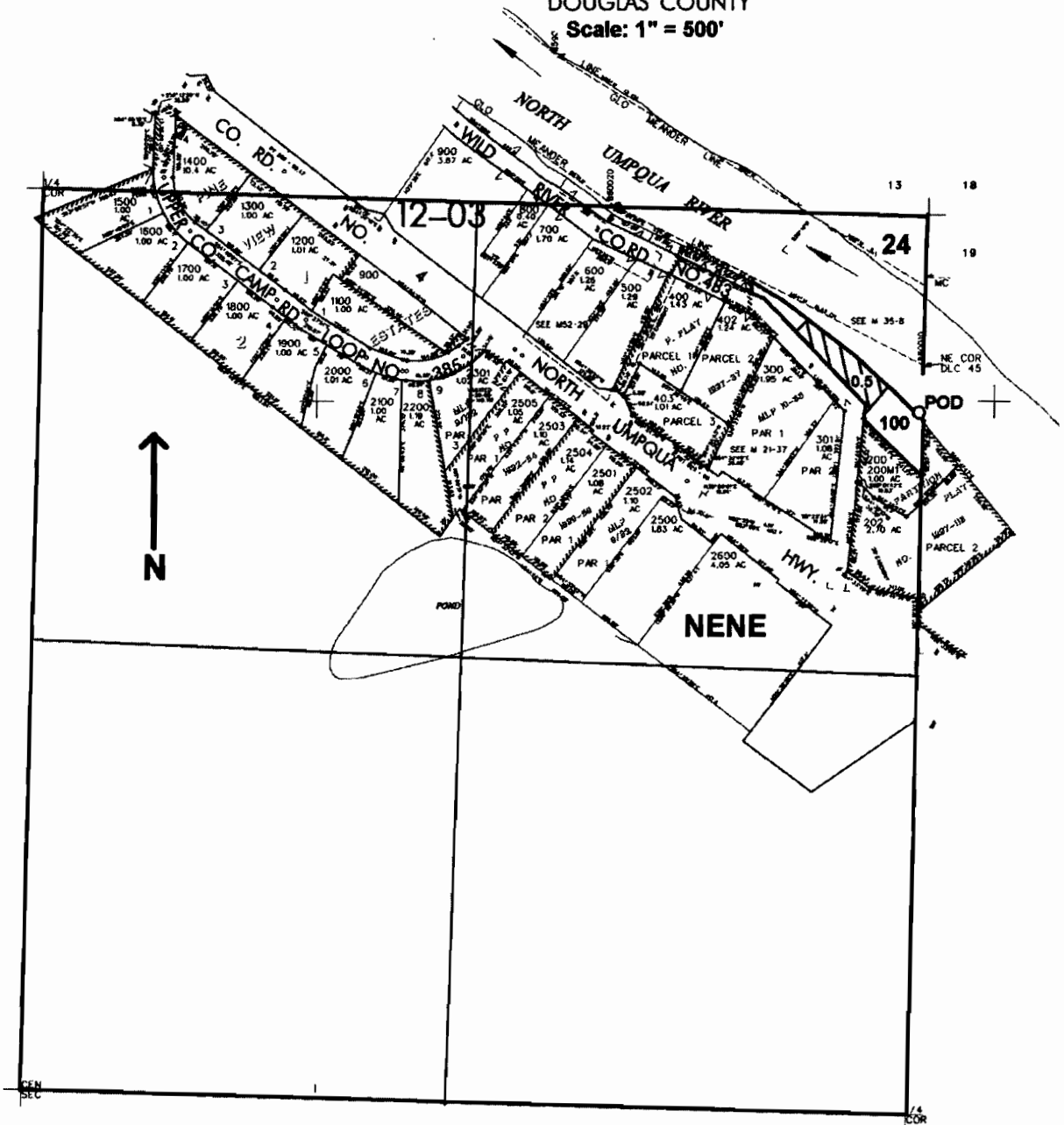


NE1/4 SEC. 24 T.26S. R.4 W. W.M.

DOUGLAS COUNTY

Scale: 1" = 500'



POD is located 585 ft. S. and 10 ft. W. from the NE corner of Sec. 24

app # 586286

RECEIVED
APR 18 2005
WATER RESOURCES DEPT
SALEM, OREGON