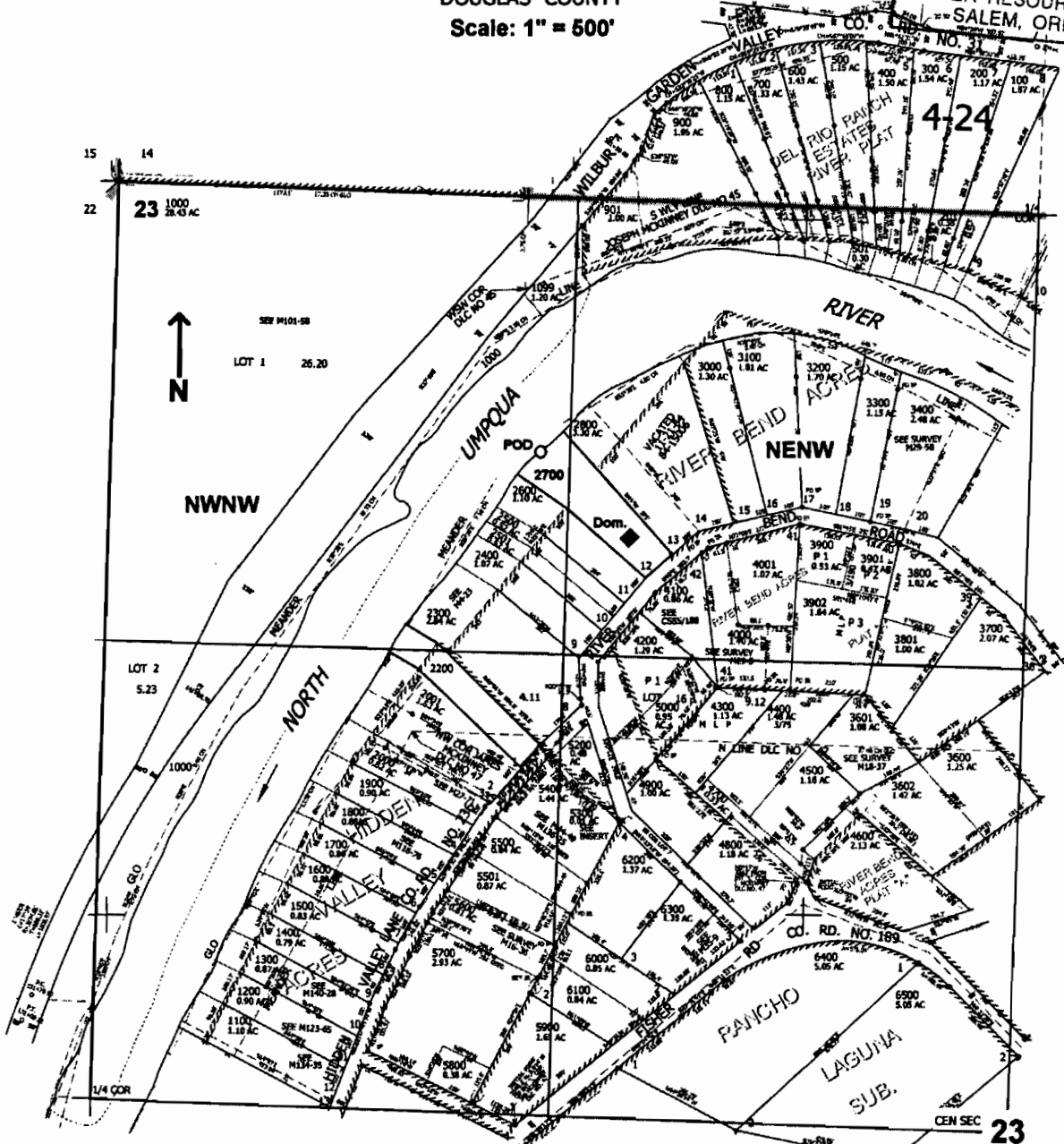


RECEIVED

SEP 14 2005

WATER RESOURCES DEPT  
SALEM, OREGON

NW1/4 SEC.23 T.26S. R.6W. W.M.  
DOUGLAS COUNTY  
Scale: 1" = 500'



POD is located 735 ft. S. and 1250 ft. E. from the NW corner of Sec. 23

app no 3-86418