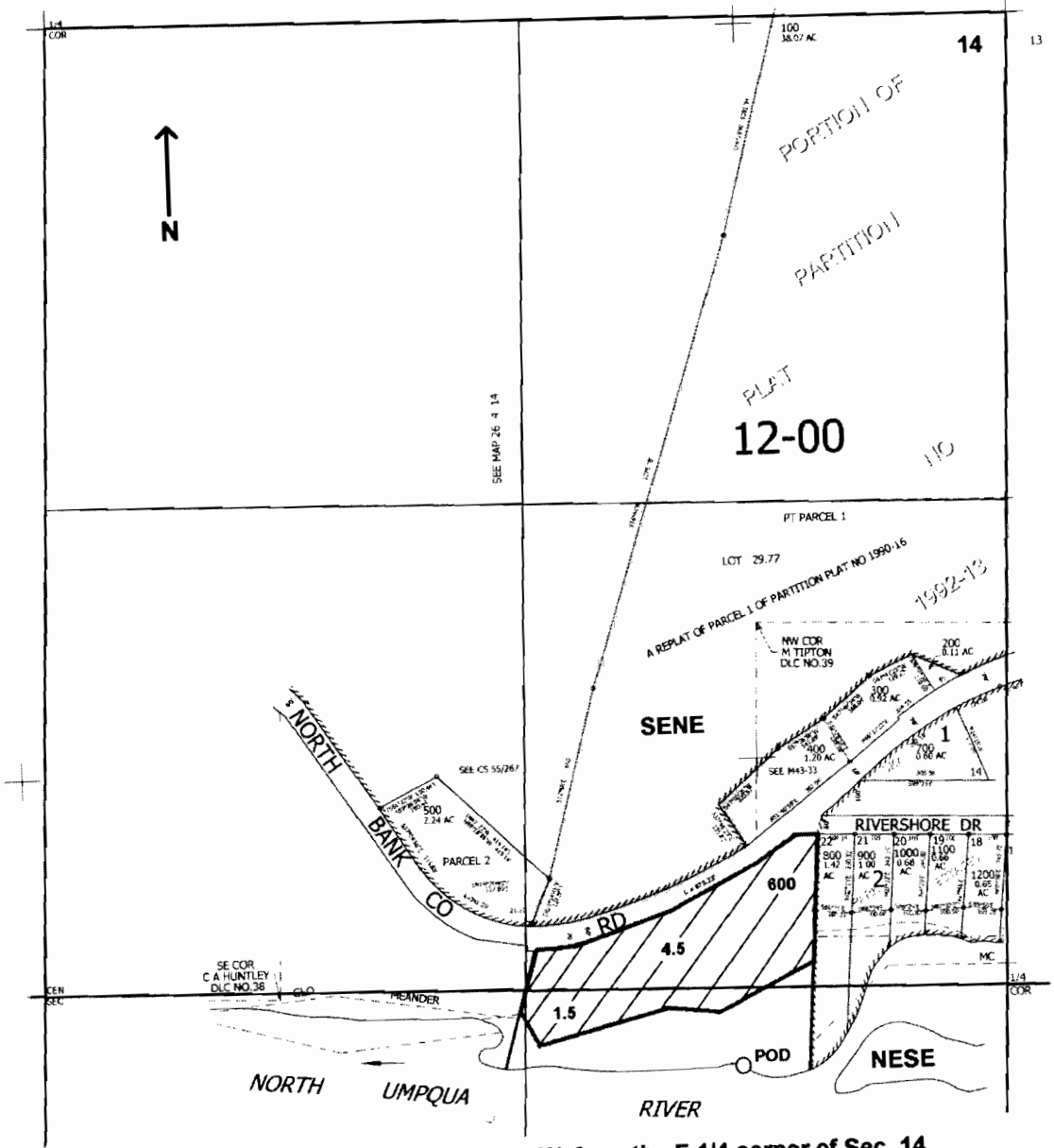


SEC.14 T.26S. R.4W. W.M.
DOUGLAS COUNTY
Scale: 1" = 500'

11 12
13



POD is located 215 ft. S. and 725 ft. W. from the E 1/4 corner of Sec. 14

app # S 86264

RECEIVED
APR 19 2005
WATER RESOURCES DEPT
SALEM, OREGON