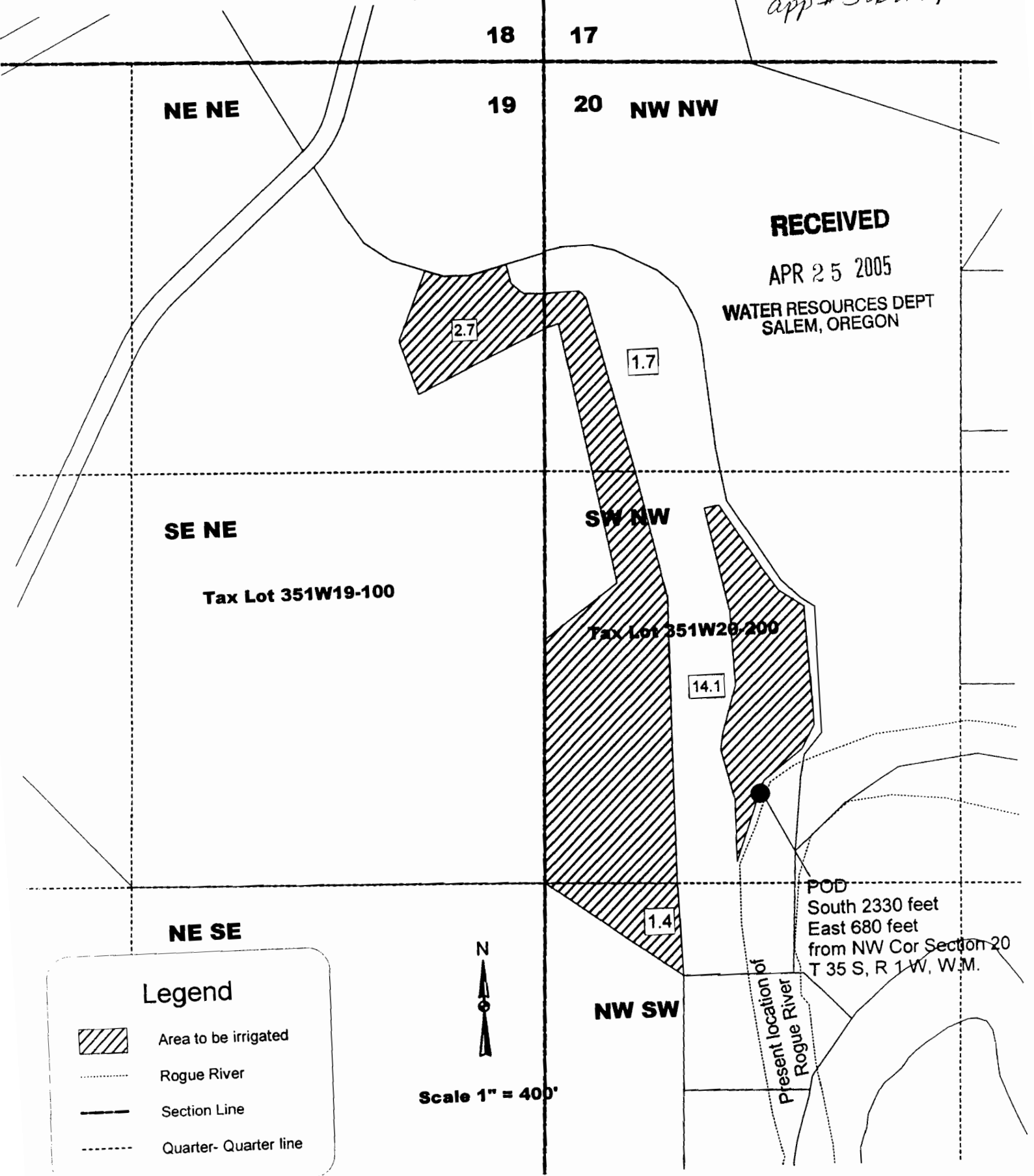



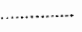
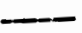
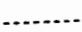
**Application Map
 Appropriation of Surface Water
 Lost Creek Reservoir
 T35S, R1W, Sec 19 & 20, W.M.**

app # 586274



RECEIVED
 APR 25 2005
 WATER RESOURCES DEPT
 SALEM, OREGON

Legend

-  Area to be irrigated
-  Rogue River
-  Section Line
-  Quarter- Quarter line



Scale 1" = 400'

POD
 South 2330 feet
 East 680 feet
 from NW Cor Section 20
 T 35 S, R 1 W, W.M.

Present location of
 Rogue River